



Sliding door systems for bottom-running doors:
SlideLine

Technik für Möbel


Hettich

Slide it. Love it.

Everyone does it: Slide it. Love it.

People like to keep it simple. On their tablet PCs. On their smartphones. The revolutionary aesthetic appeal of virtual sliding fascinates millions: gentle, flowing movement, simply at the touch of a finger. But sliding in the real world's right on trend too. Truly practical cars have a sliding door; a sliding roof provides fresh air and a feeling of freedom, and at home we slide panel curtains and doors as room dividers or on furniture.

Are you open to new trends? Because if you are, new doors are about to open for you too. In this case they open to the side. Whether for the bedroom, living room or kitchen furniture – Hettich gives you innovative sliding door systems that go perfectly with your furniture.

Are you open to a new love? Welcome to Hettich.

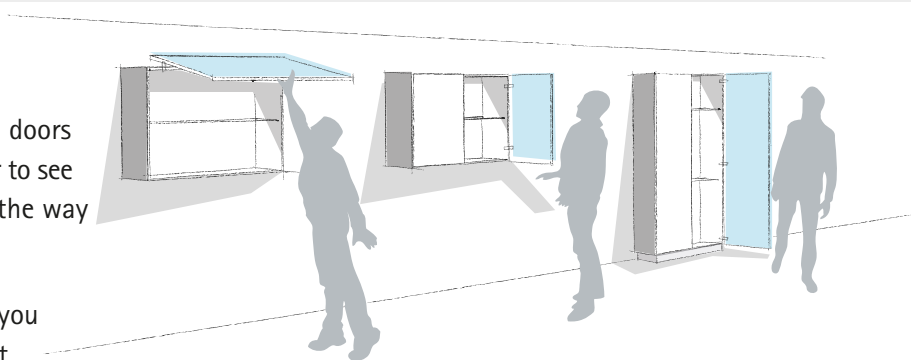


Ergonomics

Always in reach. Never in the way.

In terms of ergonomics and convenience, sliding doors are a cut above any other door system. That's clear to see in everyday use: open sliding doors don't get in the way where space is at a premium.

Open doors on wall units are not likely to leave you injured. Sliding doors are also easy to open without stretching or dodging out of the way.



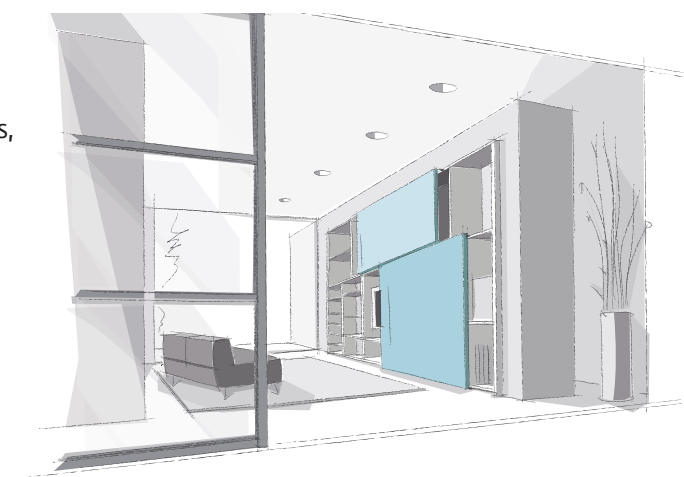
Design

Unadulterated form. Distinctive surfaces.

Sliding doors provide the key to picking up on modern, spacious interior design and cleverly carry it through in furniture. Because large surface doors, particularly with flush fitted sliding door systems, are the ideal creative element for purist interior design.

Hettich sliding door systems impress with narrow reveals that hardly detract from the homogeneous look of furniture front panels. Only a few reveals are visible on large format front panels anyway.

Elegant fascias reduce the number of reveals to a minimum. Easy precision adjustment provides superb finished results with perfect reveal alignment.



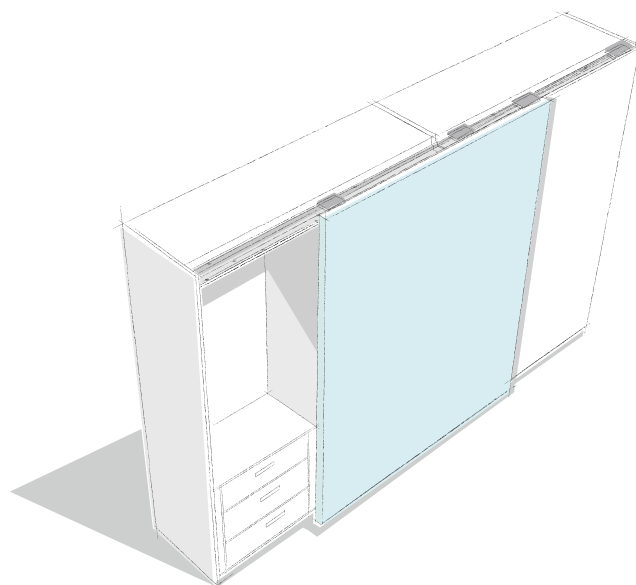
Functionality

First easy. Then quiet.

Sliding doors are particularly good at meeting the demands that users place on cabinet doors today: they are easy to open and close.




The ergonomic benefit provided by the linear door action of sliding doors is optimised further still by low opening forces. The convenient Silent System closes the sliding door quietly and gently.

Altogether, Hettich sliding door systems leave no margin for doubt with reliable quality, superb smooth running action and a long service life.



Sliding door system / bottom running

► Range summary / technical comparison

	SlideLine M, overlay	SlideLine M, inset	SlideLine 55
			
Page	4 – 5	18 – 19	30 – 31
Description	Bottom running sliding door system with one runner	Bottom running sliding door system with two runners	Bottom running sliding door system with two runners
Number of runners	1	2	2
Door action	Horizontal	Horizontal	Horizontal
Door position	Overlay	Inset	Inset
Door weight	► 30 kg max.	► 30 kg max.	► 15 kg max. with plastic profile ► 30 kg max. with aluminium profile
Door material	Wood Aluminium Glass	Wood Aluminium Glass	Wood
Door width mm	300 – 1800	300 – 1800	400 – 2000
Door height mm	up to 2000	up to 2000	700 – 1500
Silent System	Soft closing, soft opening, soft colliding	Soft closing, soft opening, soft colliding	Soft closing

Sliding door system / bottom running

► Range summary / technical comparison

SlideLine 56



38 – 39

Bottom running
sliding door system
with two runners

2

Horizontal

Inset

► 40 kg max.

Wood

500 – 1000

700 – 2000

Soft closing

Sliding door system / bottom running

- ▶ SlideLine M / overlay door position
- ▶ All the benefits at a glance



Design upgrade for furniture. SlideLine M upgrades the practical value and design of furniture. Living room units and shelf systems. Kitchen wall units and bathroom furniture. And, of course, office cabinets too. The versatile system is suitable for all common furniture constructions. Wooden, glass or aluminium framed doors weighing up to

30 kg can be installed quickly and easily. Profiles are available for several shelf thicknesses. Sliding doors running one in front of the other in one profile are also easy to produce. The Silent System is integrated on the running component and slows down door running action in closing, opening and colliding direction.



Including a feel of luxury: Silent System lets doors open and close quietly and gently. Where several sliding doors run side by side in one profile, they can even be slowed down as they move towards each other.



Tool-less fast installation: the SlideLine M system makes easy, fast work of installing sliding doors.



Spot on: perfectly align sliding doors – with the integrated height adjuster (+/- 2 mm).



Fast and easy: profiles are simple screw mounted to the assembled carcass.

Sliding door system / bottom running

- ▶ SlideLine M / overlay door position
- ▶ Summary



Performance summary

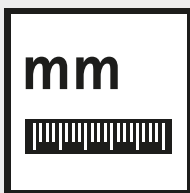
6 – 7

- ▶ Technical details in brief
- ▶ Door sizes
- ▶ Silent System
- ▶ Operating principle



System components

8 – 9



Planning dimensions

10 – 13



Installation

14 – 17



Technical information

- ▶ Calculating door weights
- ▶ Design advice sliding door systems
- ▶ Quality criteria

46 – 47

48 – 50

51



For further information, go to www.hettich.com/short/b42691

- ▶ Detailed installation instructions
- ▶ CAD data
- ▶ Assembly video

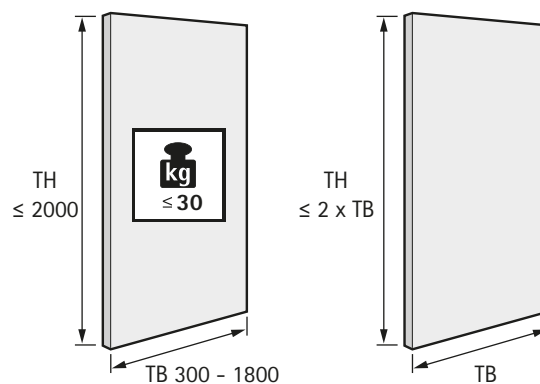
Sliding door system / bottom running

- SlideLine M / overlay door position
- Performance summary

Technical details in brief

- 1-track, bottom running sliding door system
- Overlay door position
- Wooden, glass or aluminium framed doors
- Door weight up to 30 kg
- Door height up to 2000 mm
- Door width from 300 - 1800 mm
- Shelf thicknesses 15, 16, 18, 19, 22, 25 mm
- +/- 2 mm height adjustment
- Silent System in closing, opening and colliding direction
- Tool-less fast installation of the front panel
- Tested to EN 15706, Level 1 or 3

Door format and door weight

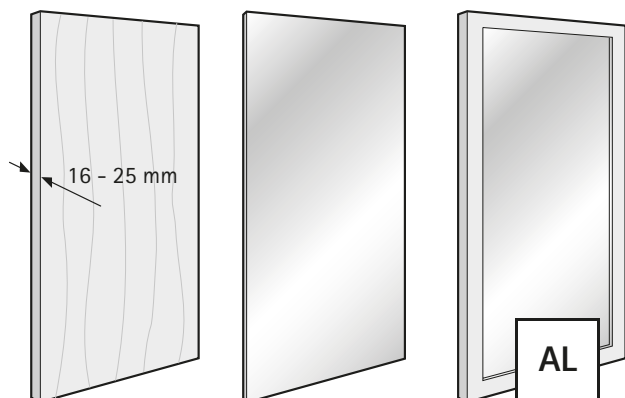


TB	300	400	500	600	700	800	900	1000	...	1800
TH ≤	600	800	1000	1200	1400	1600	1800	2000	...	2000



see pages 46 - 47

Door material



Number of door wings and door position



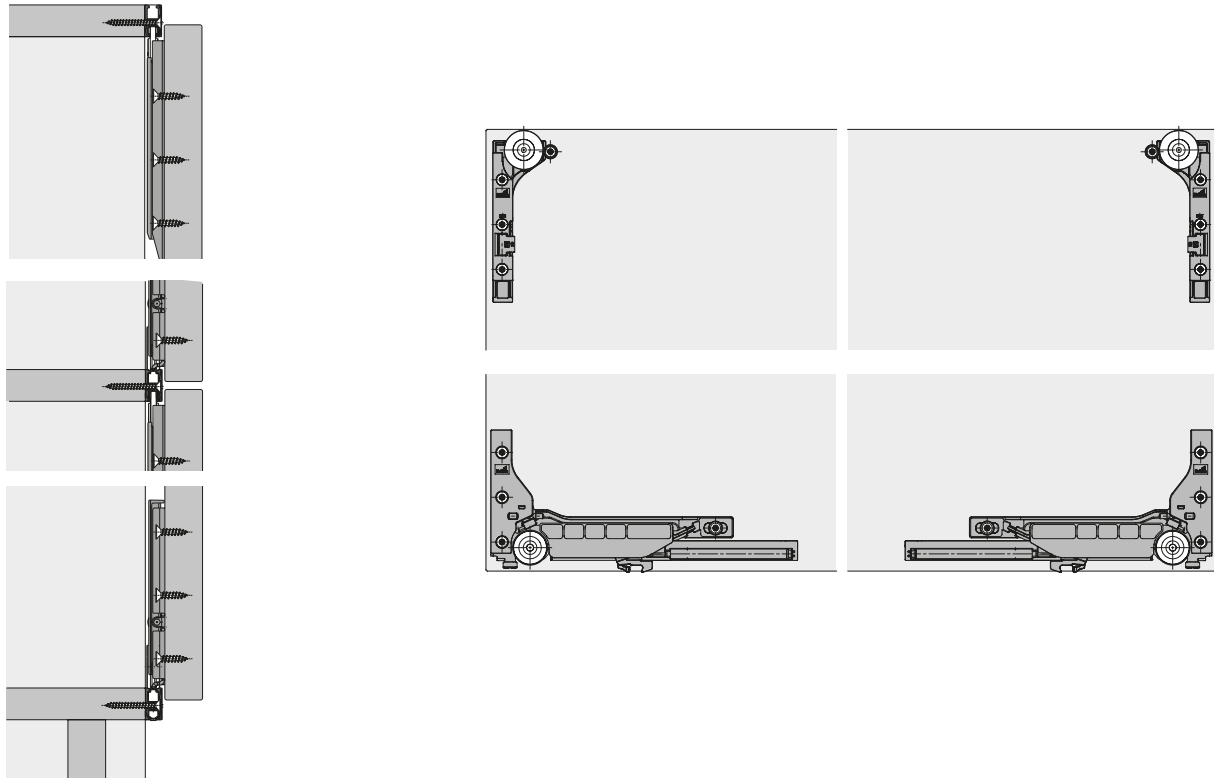
Silent System

	1-door	with several doors
Soft closing		
Soft opening		
Soft colliding		

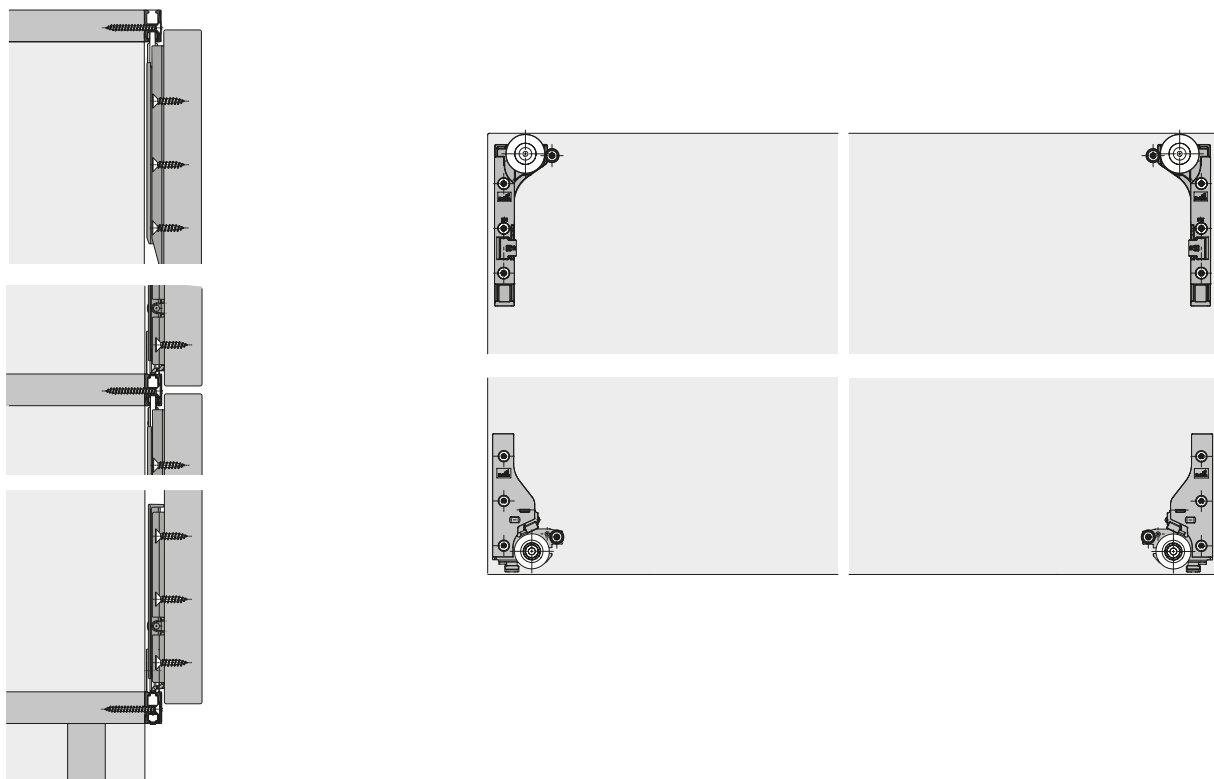
Sliding door system / bottom running

- ▶ SlideLine M / overlay door position
- ▶ Performance summary

Operating principle / SlideLine M with Silent System



Operating principle / SlideLine M without Silent System



Sliding door system / bottom running

- ▶ SlideLine M / overlay door position
- ▶ System components

Set of fittings for doors with Silent System (soft closing, soft opening and soft colliding)



- ▶ Set contains all the components required for 1 sliding door framed in wooden or 55 mm aluminium profiles with Silent System
- ▶ The set of fittings can be used without an additional upgrade set
- ▶ Suitable sheet metal screws must be used for installing the running and guide components on the 55 mm aluminium frame

Set comprises:

- ▶ 2 running components with Silent System
- ▶ 2 guide components
- ▶ 2 activators
- ▶ 2 end stops, top
- ▶ 2 guide bushes
- ▶ 1 Silent System in colliding direction
- ▶ 1 1.5 mm hexagon socket spanner
- ▶ Fixing screws for wooden doors

Advice:

- ▶ Please order profiles separately

Door weight per door (max)	Door type	Minimum door width in mm	Order no.	PU
30	Wooden doors, 55 mm aluminium framed door	450	9 156 338	1 set

Set of fittings for doors without Silent System



- ▶ Set contains all the components required for 1 sliding door framed in wooden or 55 mm aluminium profiles without Silent System
- ▶ The set of fittings can be used without an additional upgrade set
- ▶ Suitable sheet metal screws must be used for installing the running and guide components on the 55 mm aluminium frame

Set comprises:

- ▶ 2 running components without Silent System
- ▶ 2 guide components
- ▶ 2 end stops, bottom
- ▶ 2 end stops, top
- ▶ 4 guide bushes
- ▶ 1 1.5 mm hexagon socket spanner
- ▶ Fixing screws for wooden doors

Advice:

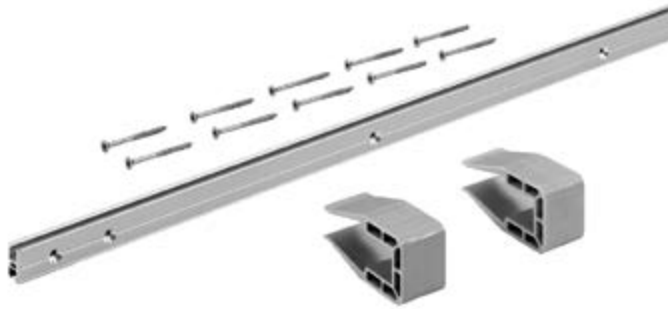
- ▶ Please order profiles separately

Door type	Minimum door width in mm	Order no.	PU
Wooden doors, 55 mm aluminium framed doors	300	9 156 339	1 set

Sliding door system / bottom running

- ▶ SlideLine M / overlay door position
- ▶ System components

Profile sets: 1 profile



- ▶ Single profiles set as upgrade for furniture applications with doors running across each other
- ▶ Profiles can be shortened as required
- ▶ If long enough, profiles can be cut into two and used as top and bottom runner profiles
- ▶ Coloured sets contain twice as many end caps

Set comprises:

- ▶ 1 aluminium runner profile, silver anodized, predrilled
- ▶ 2 mounting clips
- ▶ Fixing screws

Advice:

- ▶ Coloured sets for concealing the runner profiles with a coloured cover must be ordered separately

Profile height mm	Shelf thickness in mm	Length mm	Order no.	PU
18	18,19	2500	9 209 225	1 set
25	25	2500	9 209 230	1 set

Coloured sets for concealing the runner profiles with a coloured cover



- ▶ Set contains all the components required for concealing 1 runner profile with a coloured cover

Set comprises:

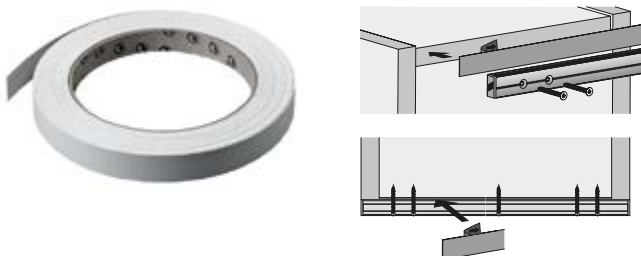
- ▶ 1 ABS decorative profile for gluing on
- ▶ 2 end caps
- ▶ 2 end caps (replacement)

Advice:

- ▶ For each profile set: 2 profiles, please order 2 coloured sets separately
- ▶ For each profile set: 1 profile, please order 1 coloured set separately

Profile height mm	Colour	Length mm	Order no.	PU
18	silver	2500	9 209 277	1 set
18	black	2500	9 209 279	1 set
18	white	2500	9 209 281	1 set
18	champagne	2500	9 209 284	1 set
25	silver	2500	9 209 399	1 set
25	black	2500	9 209 402	1 set
25	white	2500	9 209 404	1 set
25	champagne	2500	9 209 406	1 set

Spacer profile



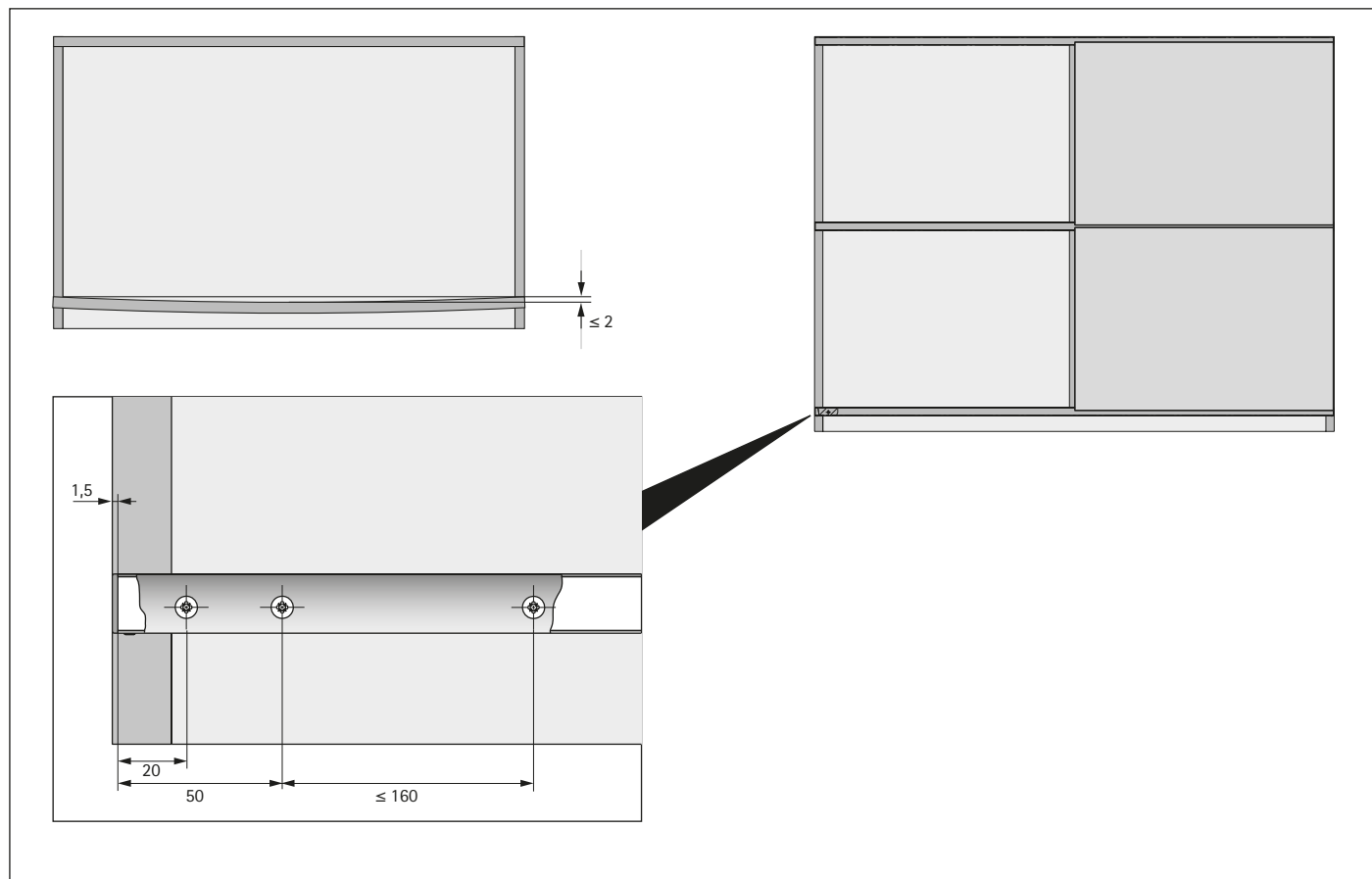
- ▶ For use with set back shelves
- ▶ Prevents deflection of the runner profiles
- ▶ Simply sticks onto shelf between side and centre panels
- ▶ Positively connected solution without gap between shelf and profile
- ▶ Supplied on 15 m roll
- ▶ Easily shortened
- ▶ Thickness 1 mm
- ▶ Colour: grey

Profile height mm	Shelf thickness mm	Order no.	PU
16	16 - 19	9 200 421	1 ea.
22	22 - 25	9 200 422	1 ea.

Sliding door system / bottom running

- SlideLine M / overlay door position
- Planning dimensions

Intended Use



Intended use

The SlideLine M furniture fitting is intended for application in furniture and use in dry indoor environments where it is protected from the elements. The version of the fitting with Silent System meets the requirements under DIN EN 15706 Level 3. The version of the fitting without Silent System meets the requirements under DIN EN 15706 Level 1.

Technical specifications

Door weight:	up to 30 kg	
Door size:	Min.	Max.
Width:	300 mm	1800 mm
Height:	300 mm	2000 mm
Max. height H for width W:	$H \leq 2 B$	
Shelf thicknesses:	15 mm, 16 mm, 18 mm, 19 mm, 22 mm, 25 mm	
Height adjustment:	± 2.0 mm	

When constructing furniture, it is important to note that the sliding door must be no higher than twice its width. Up to this relative height, SlideLine M meets the above-stated quality and safety requirements under DIN EN 15706. If the specified maximum relative height is exceeded, the furniture construction must undergo a function and safety test as defined in the relevant furniture standard.

Under DIN EN 15706 Level 1, the version of the fitting without Silent System is approved for use if it passes the 2 kg closing test specified there.

If a higher load capacity is to be reached, e.g. on the grounds of requirements defined in a relevant furniture standard, this must be ensured by the fabricator in terms of furniture design (e.g. inset installation).



Safety risk

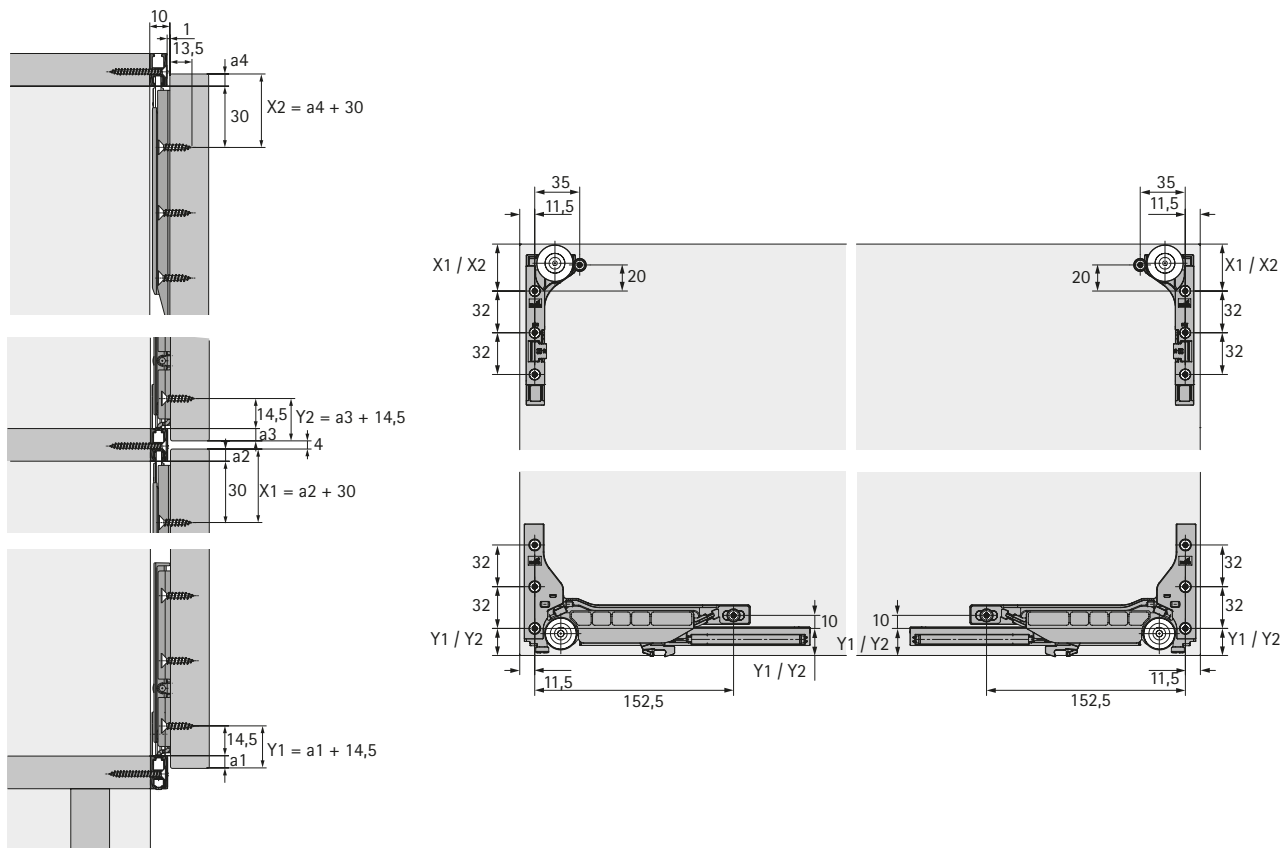
The SlideLine M sliding door fitting is only suitable for applications in which the design of furniture and its dimensional accuracy are capable of ensuring that the top and bottom runners always remain parallel (i.e. also in the case where there is a particularly heavy load on a shelf to which a runner is connected, for example) with a tolerance of no more than ± 1 mm from the specified distance between both runners.

Any failure to meet this requirement, e.g. as a result of sag in the panel to which the bottom runner is mounted, presents a safety risk (door falling out of the runner) that may cause personal injury. The stops must be securely mounted in the profile or safety could be put at risk (from door coming off at side) which may result in personal injury.

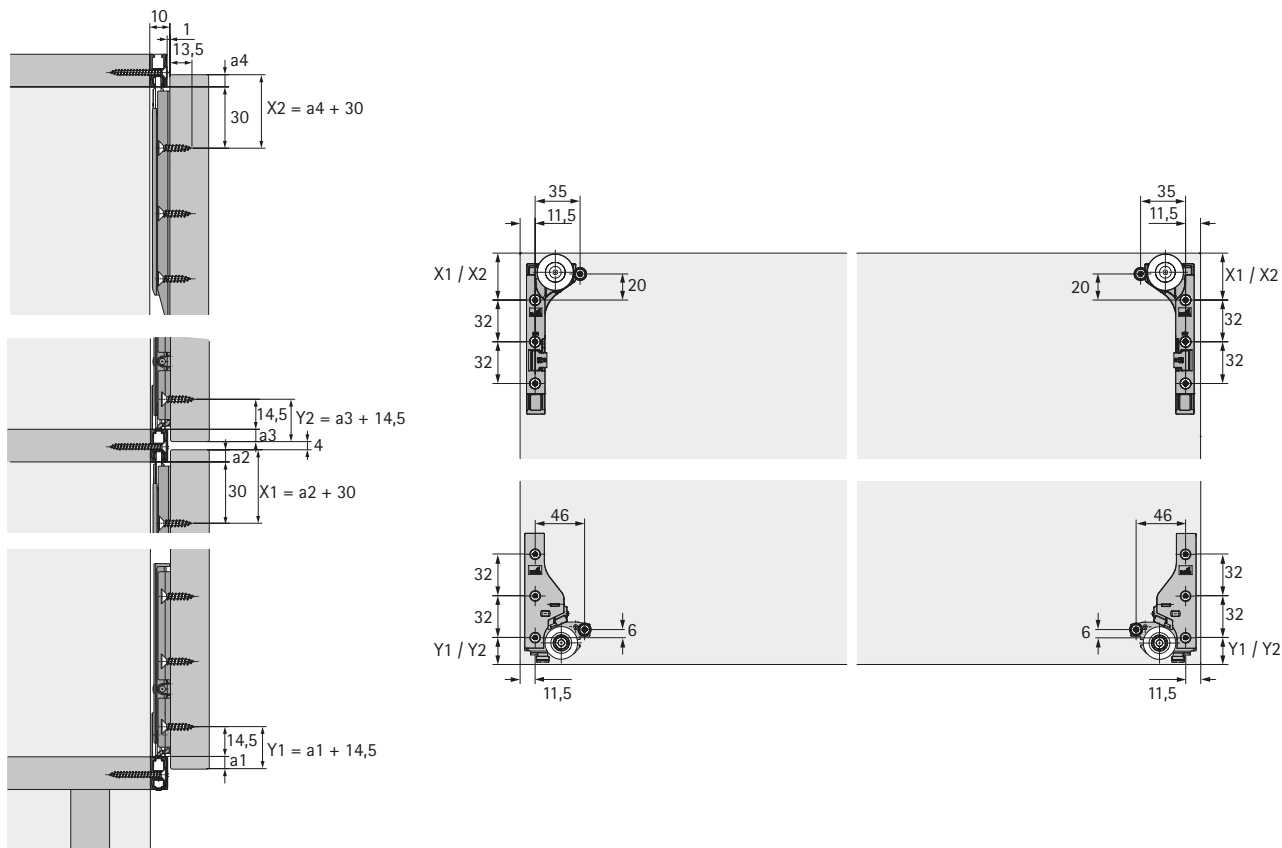
Sliding door system / bottom running

- SlideLine M / overlay door position
- Planning dimensions

Installation dimensions wooden door with Silent System / 55 mm aluminium framed door



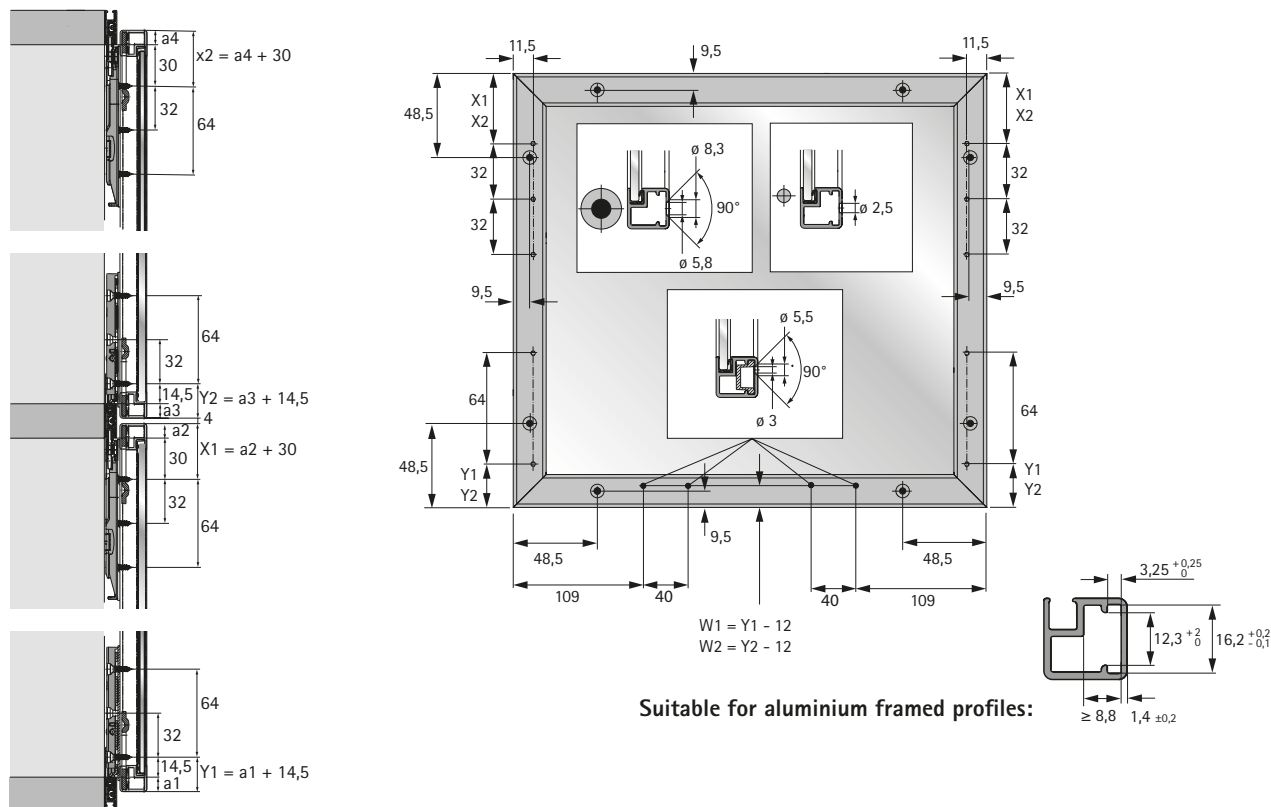
Installation dimensions for wooden door / 55 mm aluminium frame door without Silent System



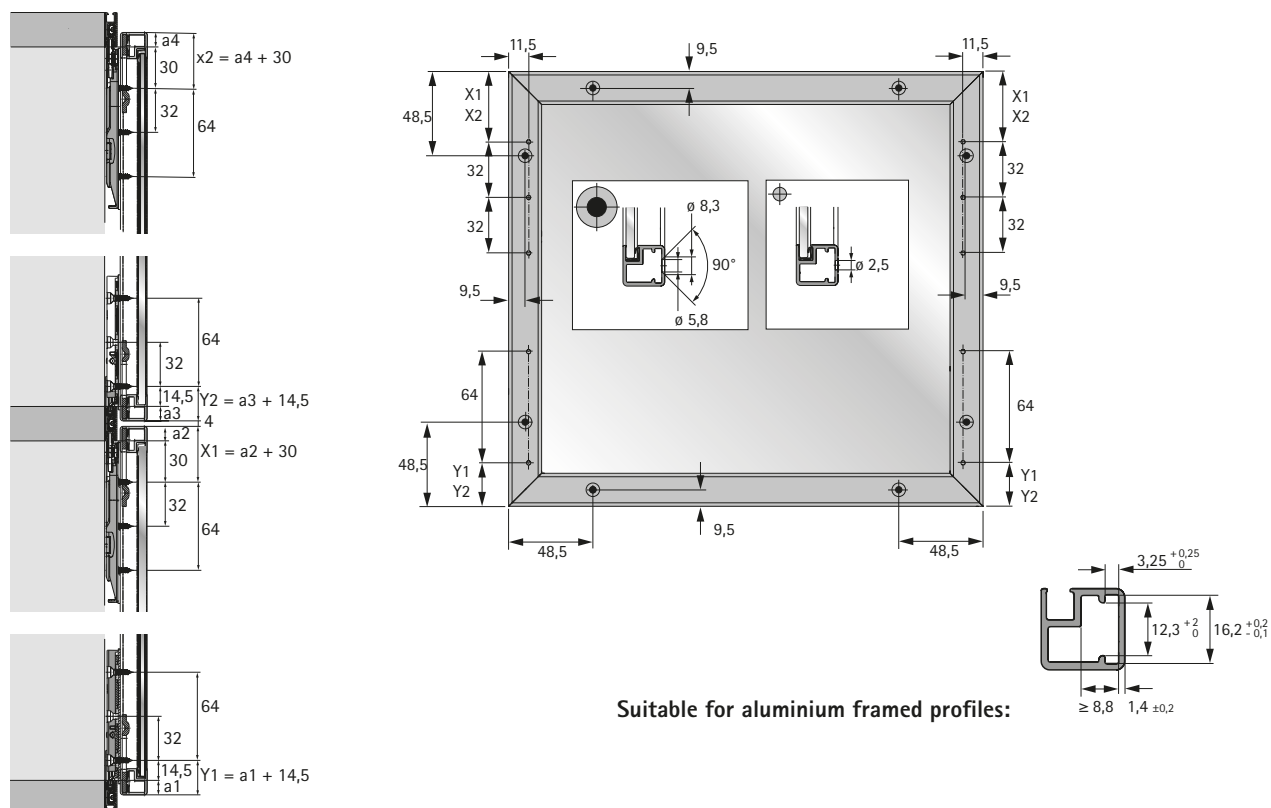
Sliding door system / bottom running

- SlideLine M / overlay door position
- Planning dimensions

Installation dimensions for 19 mm aluminium framed doors with Silent System



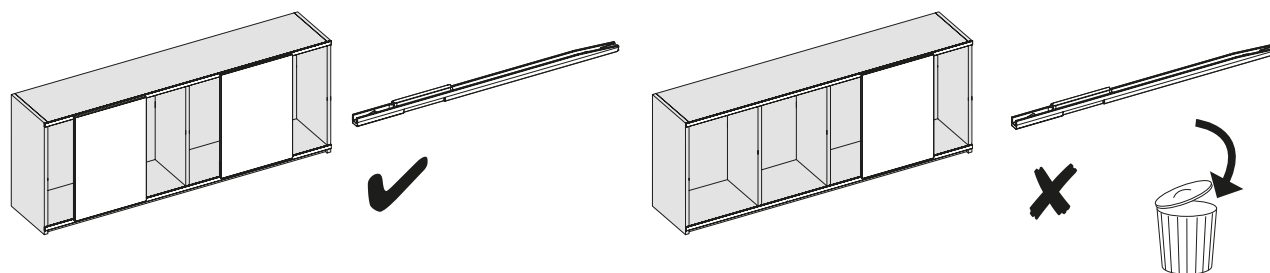
Installation dimensions for 19 mm aluminium frame door without Silent System



Sliding door system / bottom running

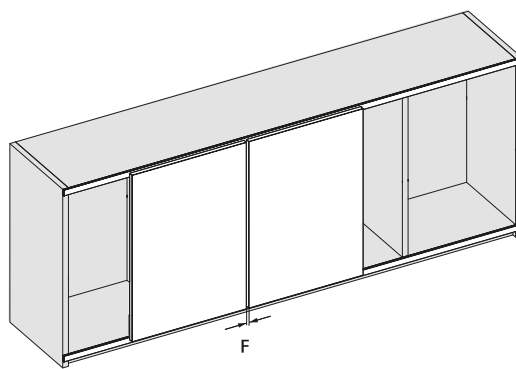
- SlideLine M / overlay door position
- Planning dimensions

Soft colliding for two or more doors

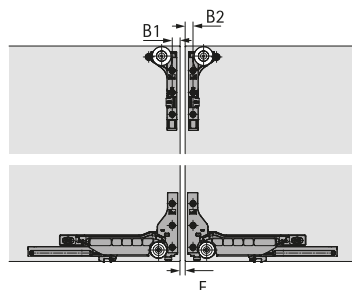


If two or more sliding doors run in one plane, they can be slowed down by soft colliding as they move towards each other.

Installation dimensions for soft colliding



The centre reveal F between two wooden doors can be influenced by the position of drill holes B1 and B2 for the running and guide components. Use of the standard drilling pattern produces a centre reveal of $F = 10$ mm.



Centre reveal F mm	Drilling position B1 mm	Drilling position B2 mm
10	11,5	11,5
8	12,5	12,5
6	13,5	13,5
4	14,5	14,5
2	15,5	15,5

Depending on door width, door height and closing speed, door tops may collide if the centre reveal is < 10 mm. For this reason, Hettich recommends a centre reveal F of 10 mm for aluminium framed doors and glass doors.

- ▶ SlideLine M / overlay door position
- ▶ Installation

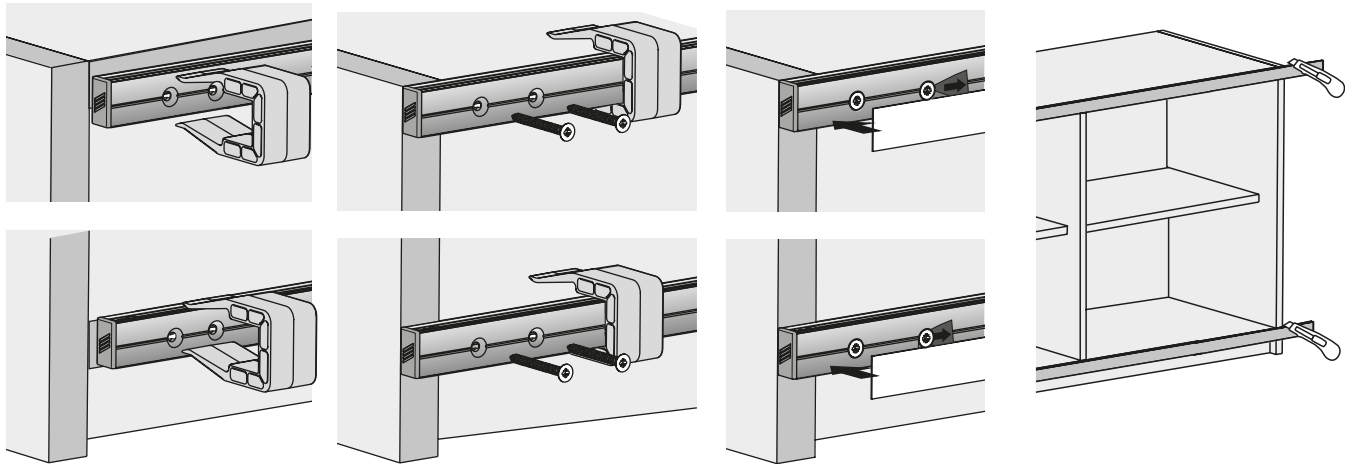
Technical diagrams for the assembly of the sliding door system.

The top section shows the installation of the top and bottom rollers. The formula $Z = a + B1 + 5$ is used for the top roller, and $Z = a + B1$ is used for the bottom roller. The middle section shows the installation of the side guides, with a formula of 1,5. The bottom section shows the installation of the door panels, with a warning symbol and a circular inset showing the correct alignment.

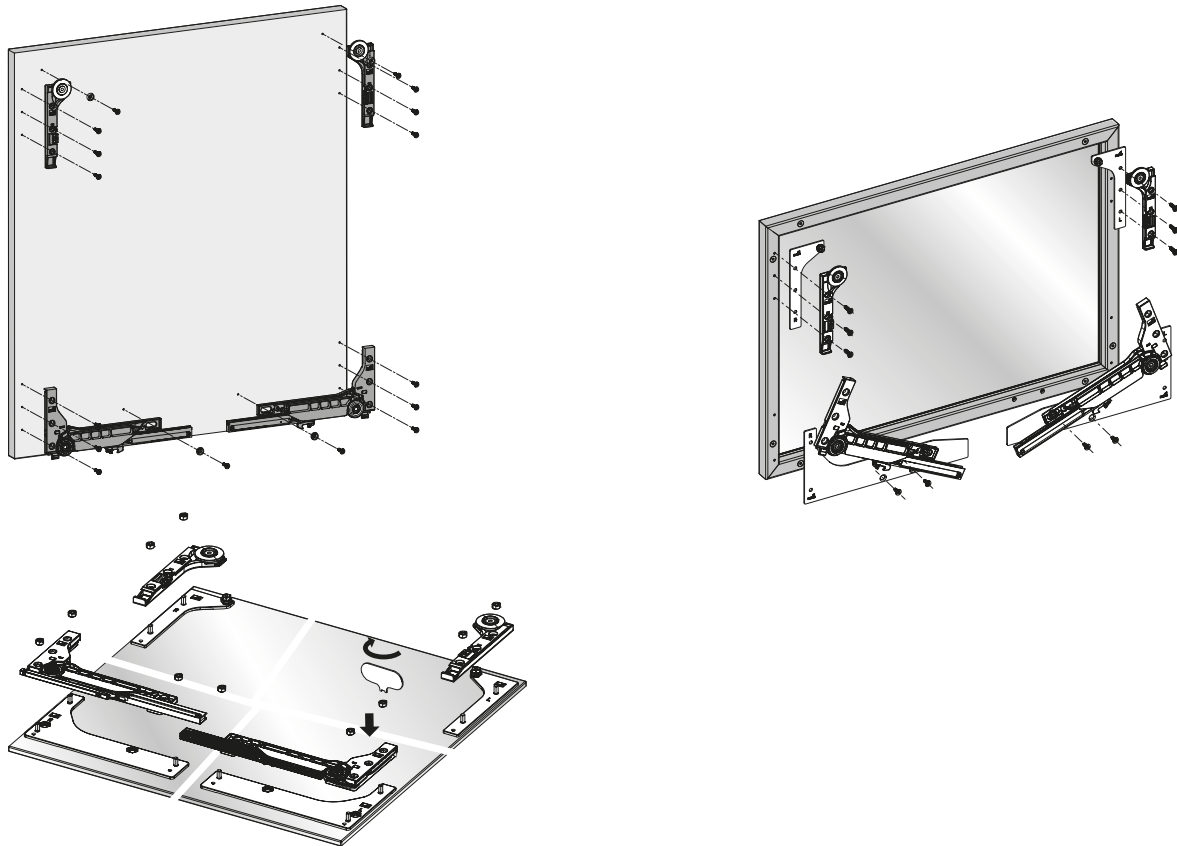
Sliding door system / bottom running

- ▶ SlideLine M / overlay door position
- ▶ Installation

Installing the runner profiles and decorative profiles



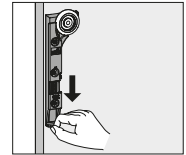
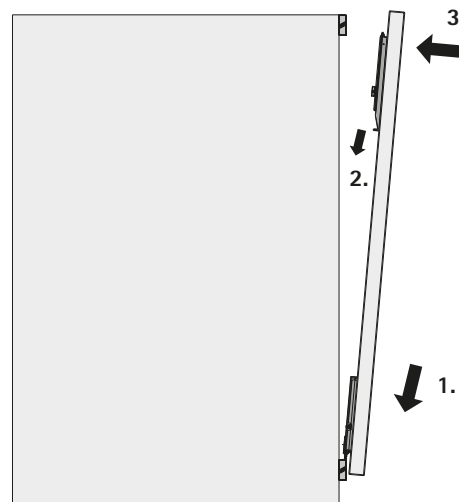
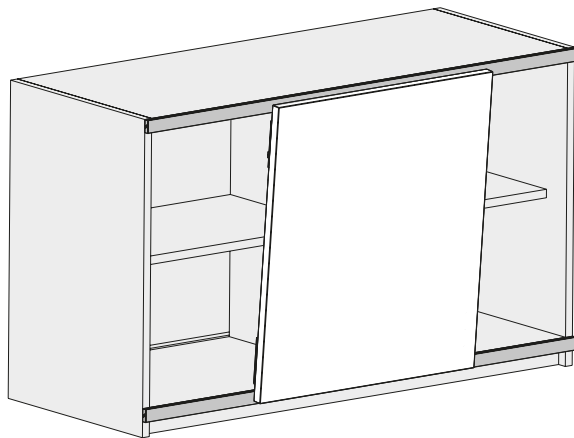
Installing the fitting and upgrade sets



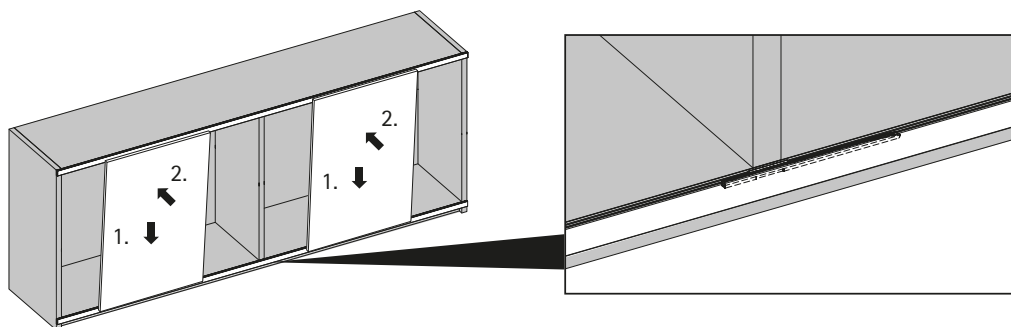
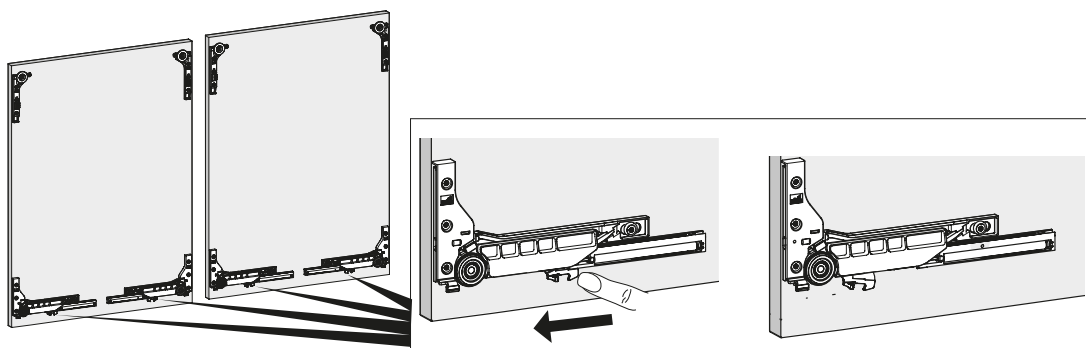
Sliding door system / bottom running

- ▶ SlideLine M / overlay door position
- ▶ Installation

Installing door



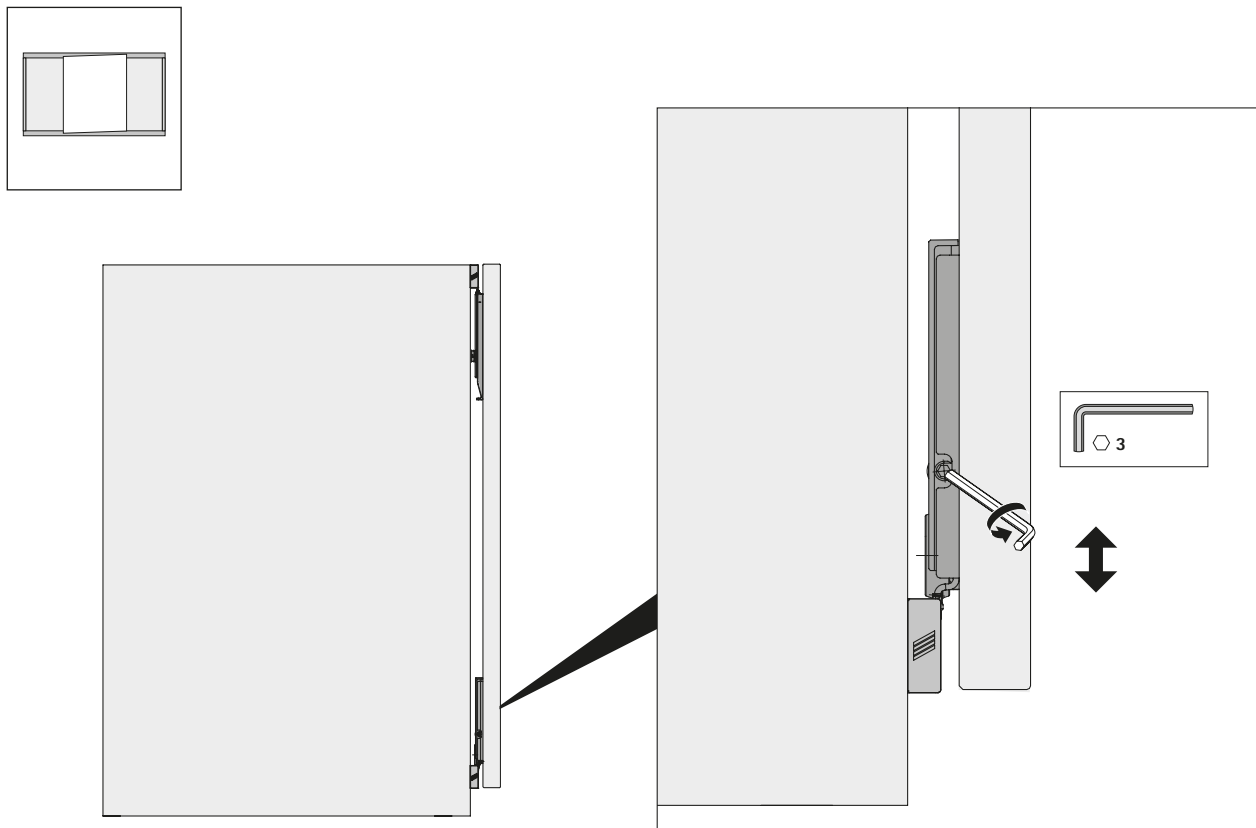
Installing several doors with soft colliding



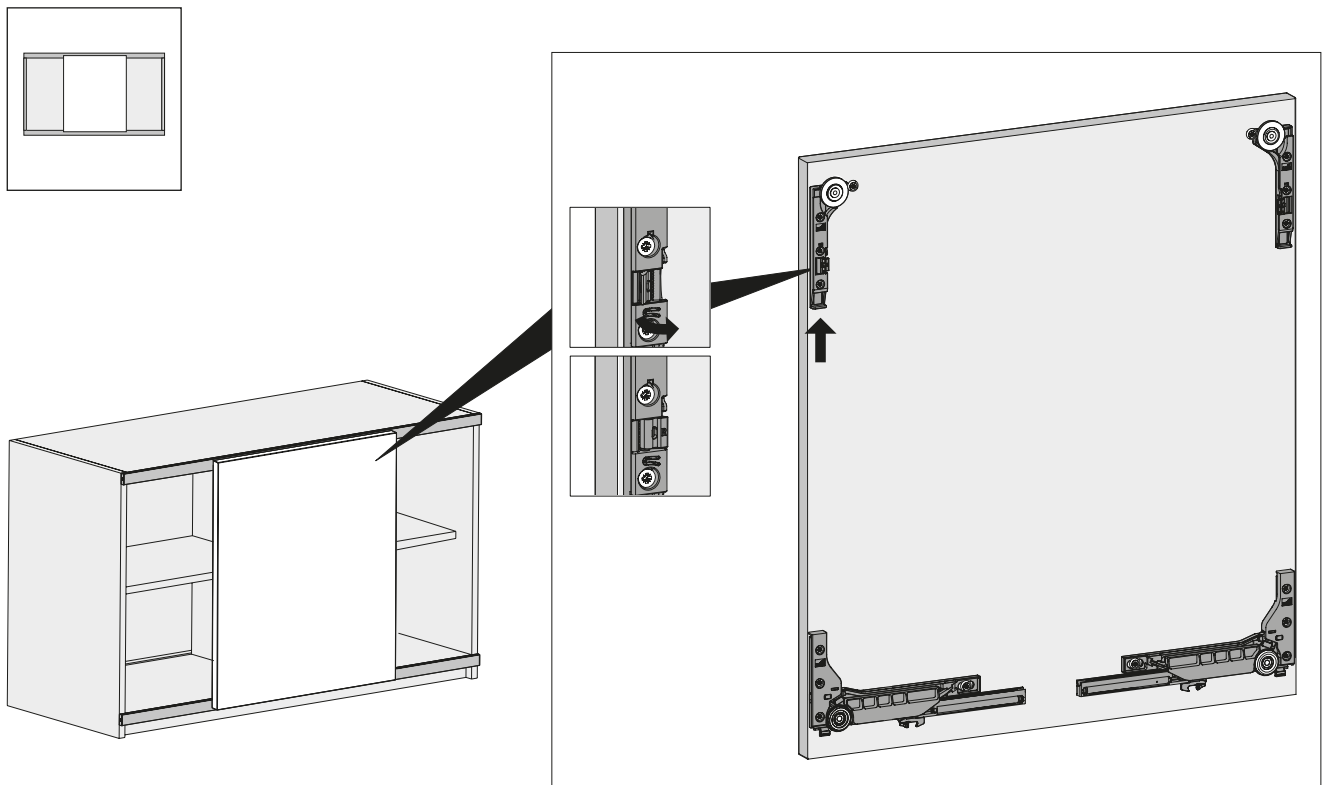
Sliding door system / bottom running

- ▶ SlideLine M / overlay door position
- ▶ Installation

Aligning door



Securing door



Sliding door system / bottom running

- ▶ SlideLine M / inset door position
- ▶ All the benefits at a glance



One system, countless applications. SlideLine M makes child's play of designing and assembling 2-door or 3-door cabinets. There's no limits to your creativity. Whether in the kitchen wall unit, as a clever alcove solution, in children's bedroom furniture or in the sideboard, SlideLine M impresses with its tremendous versatility. Wooden, aluminium framed

or glass doors weighing up to 30 kg are quietly and gently slowed down in closing, opening and colliding direction. The runner and guide profiles can be installed on all sorts of carcass and worktop materials as they can either be screwed on, stuck on or groove mounted.



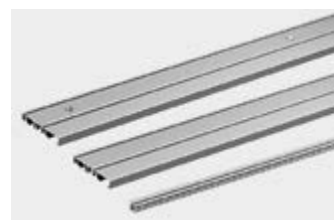
Design option: Whether in the wall unit or as clever alcove solution, SlideLine M is an integral part of the modern kitchen.



No risk of trapping: SlideLine M's inset door position and Silent System is also safe for children's little hands and feet.



Tried and tested system: use of the standard SlideLine M fitting sets.



Installation options: The runner and guide profiles can either be screwed on, stuck on or groove mounted.

Sliding door system / bottom running

- ▶ SlideLine M / inset door position
- ▶ Summary



Performance summary

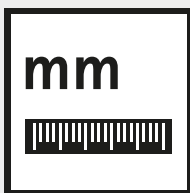
20 – 21

- ▶ Technical details in brief
- ▶ Door sizes
- ▶ Silent System
- ▶ Operating principle



System components

22 – 23



Planning dimensions

24



Installation

25 – 28



Technical information

- ▶ Calculating door weights
- ▶ Design advice sliding door systems
- ▶ Quality criteria

46 – 47

48 – 50

51

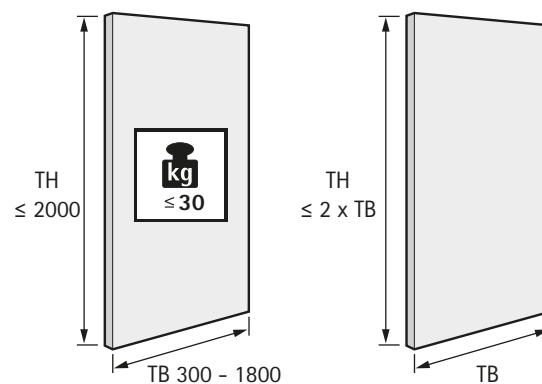
Sliding door system / bottom running

- ▶ SlideLine M / inset door position
- ▶ Performance summary

Technical details in brief

- ▶ 1-track or 2-track bottom-running sliding door system
- ▶ Inset door position
- ▶ Wooden, glass or aluminium framed doors
- ▶ 2-door or 3-door application
- ▶ Runner and guide profile for screwing on or pressing in
- ▶ Door weight up to 30 kg
- ▶ Door height up to 2000 mm
- ▶ Door width from 300 - 1800 mm
- ▶ +/- 2 mm height adjustment
- ▶ Silent System in closing, opening and colliding direction
- ▶ Door quickly mounted without the need for tools
- ▶ Tested to EN 15706, Level 3

Door format and door weight

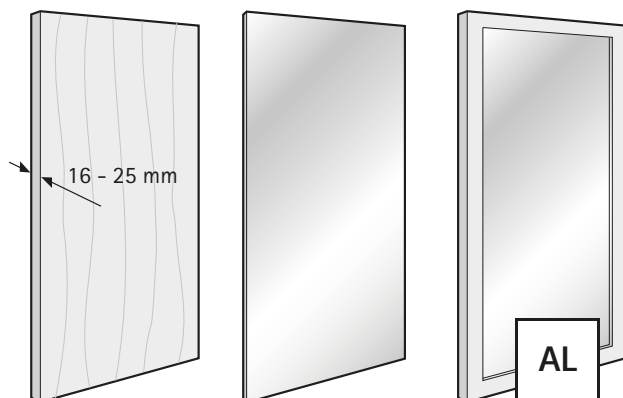


TB	300	400	500	600	700	800	900	1000	...	1800
TH ≤	600	800	1000	1200	1400	1600	1800	2000	...	2000

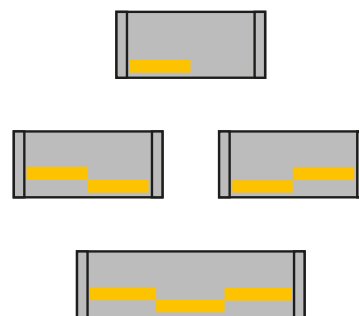


see pages 46 - 47

Door material



Number of door wings and door position



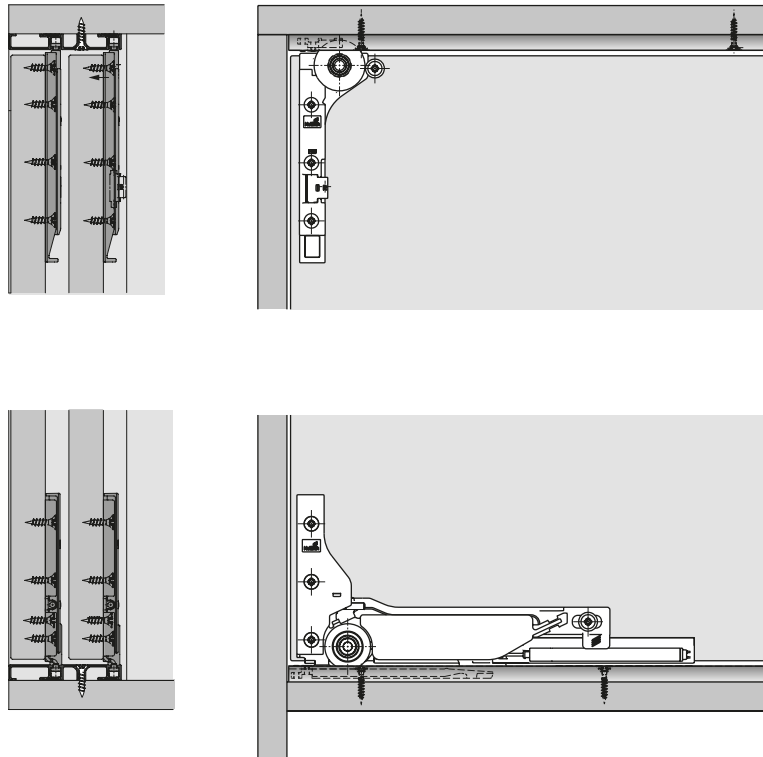
Silent System

	1-door	2-door	3-door	
Soft closing				
Soft opening				
Soft colliding				

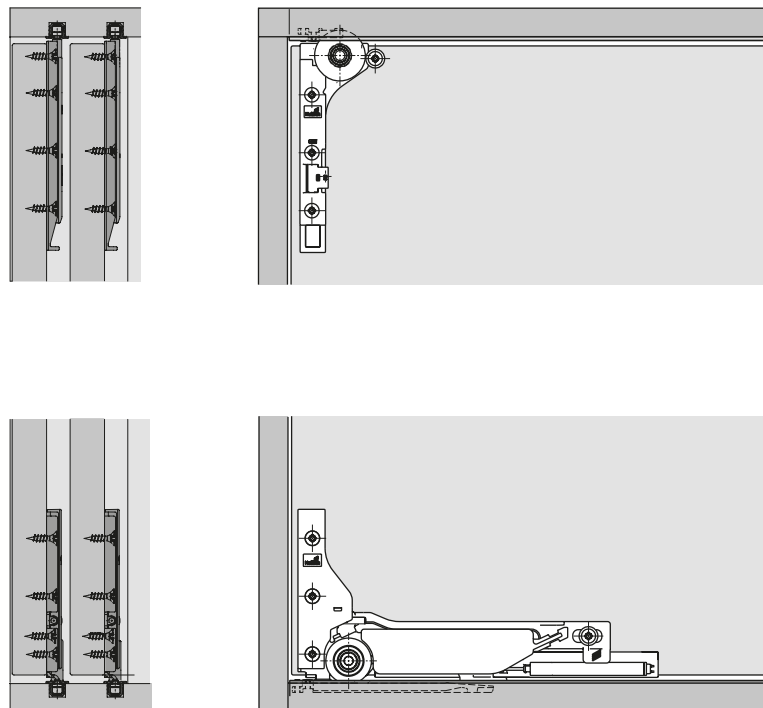
Sliding door system / bottom running

- ▶ SlideLine M / inset door position
- ▶ Performance summary

Operating principle / 2-track runner profile for screwing on / gluing on



Operating principle / 1-track runner profile for pressing in



- ▶ SlideLine M / inset door position
- ▶ System components

2-track runner profile for screwing on in the screw slot / for gluing on



- ▶ 2-track runner profile without holes
- ▶ Attachment by screwing on in the screw slot or attachment using suitable adhesive tape
- ▶ Two runner profiles must be fitted per 2-door or 3-door cabinet
- ▶ Aluminium, silver anodized

Length mm	Order no.	PU
2500	9 227 186	100 ea.

2-track runner profile for screwing on



- ▶ 2-track runner profile with holes
- ▶ Screw on attachment
- ▶ Two runner profiles must be fitted per 2-door or 3-door cabinet
- ▶ Aluminium, silver anodized

Length mm	Order no.	PU
2500	9 227 183	100 ea.

1-track runner profile for pressing in



- ▶ 1-track runner profile
- ▶ For pressing into groove
- ▶ Four runner profiles must be fitted per 2-door or 3-door cabinet
- ▶ Aluminium, silver anodized

Length mm	Order no.	PU
2500	9 227 188	100 ea.

- SlideLine M / inset door position
- System components

Fixing screws



- For 2-track runner profile for invisible attachment in screw slot
- Fixing screws for max. shelf thicknesses of 16, 18/19 and 25 mm
- Galvanised steel
- One set of screws must be used for each profile set

Set comprises:
26 screws

Shelf thickness mm	Order no.	PU
16	9 229 240	1 set
18 - 19	9 229 241	1 set
25	9 229 243	1 set

adhesive tape



- Double sided adhesive tape for gluing on 2-track runner profile
- 5 metres of adhesive tape must be used per runner profile in a length of 2,500 mm
- Using adhesive tape requires a suitable, cleaned surface
- Supplied on 25 m roll
- Easily shortened

Length m	Order no.	PU
25	9 227 006	4 ea.

Mounting aid



- 2-track runner profile for screwing on in the screw slot / for gluing on
- Installation requires the use of 2 mounting aids

Order no.	PU
9 229 154	50 ea.

Screw on door stop / spacer



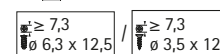
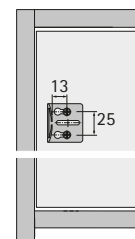
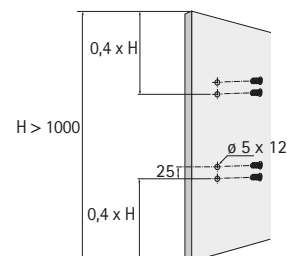
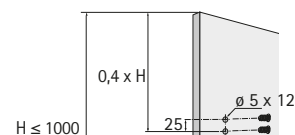
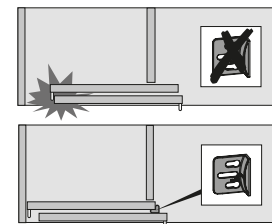
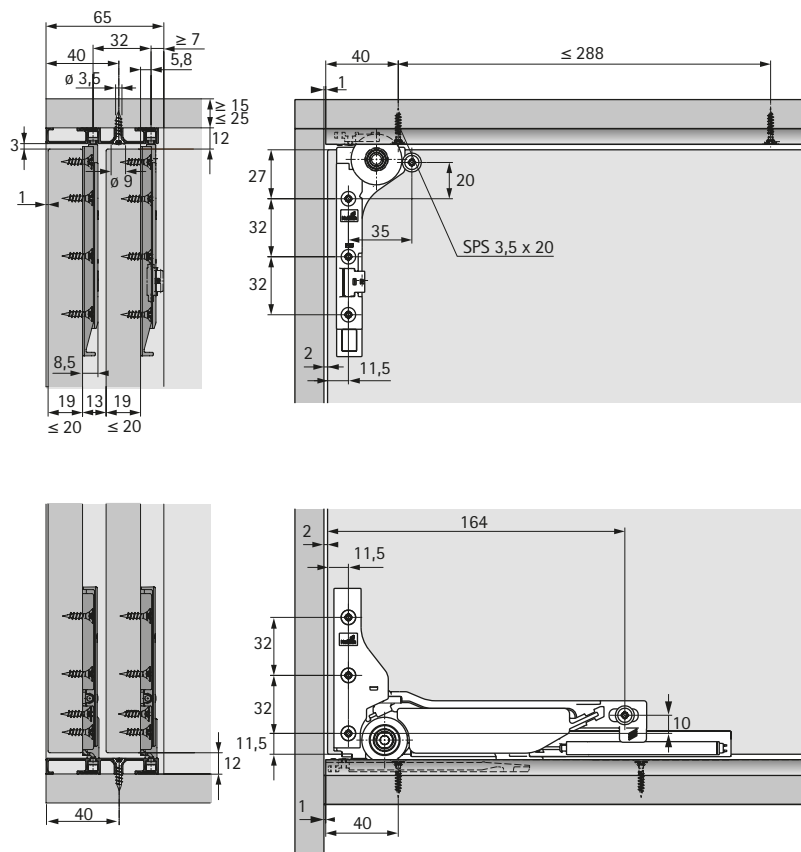
- 1 door application / spacer required for 2-door cabinet with a door height <1,000 mm
- 2 door stops / spacers are required for a 2-door cabinet in a door height > 1,000 mm
- Plastic, grey

Order no.	PU
9 115 216	100 ea.

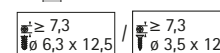
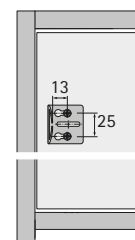
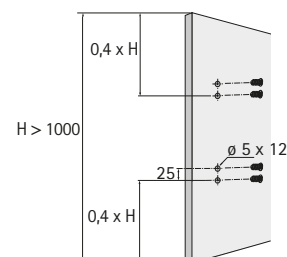
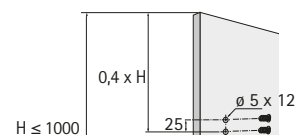
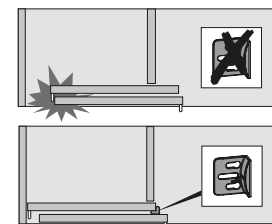
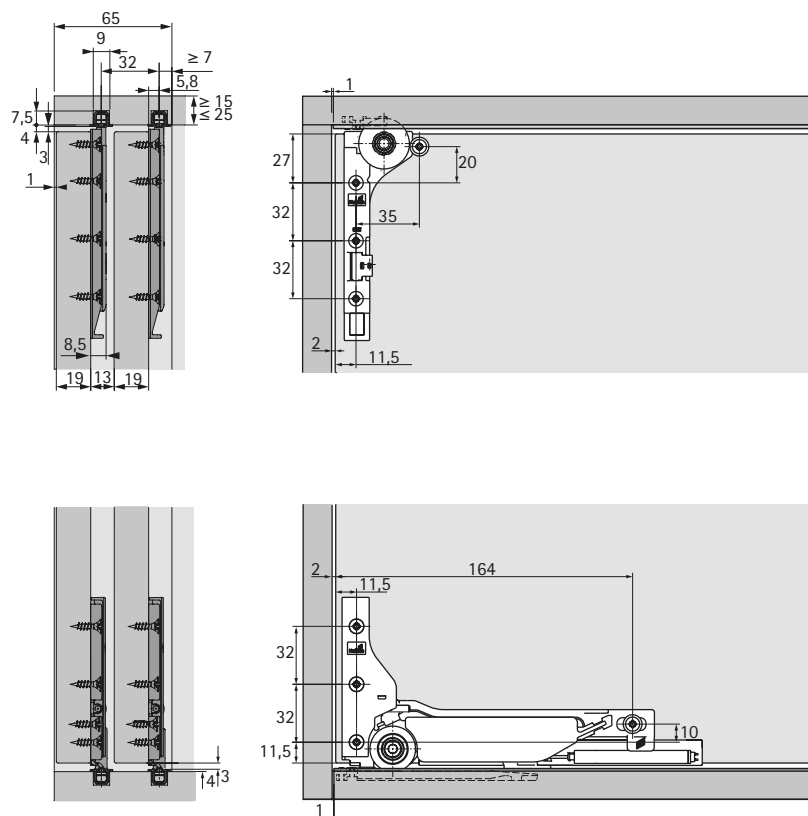
Sliding door system / bottom running

- ▶ SlideLine M / inset door position
- ▶ Planning dimensions

Installing 2-track runner profile for screwing on / gluing on



Installing 1-track runner profile for pressing in

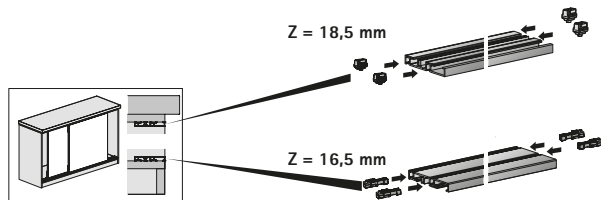


Sliding door system / bottom running

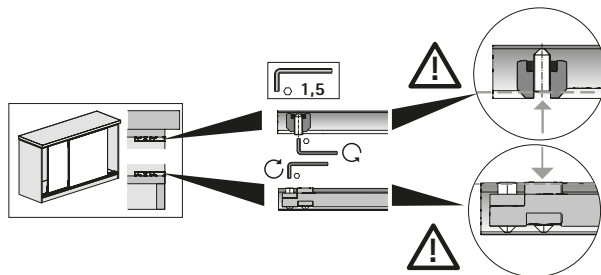
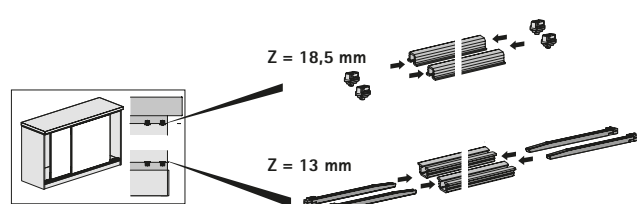
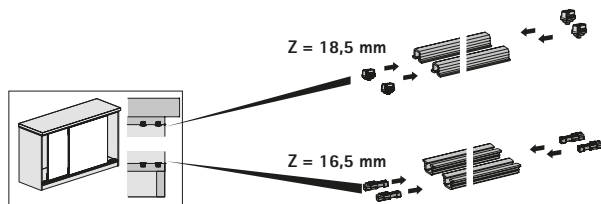
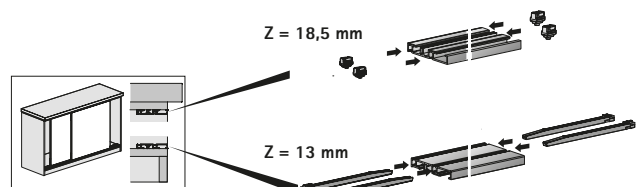
- ▶ SlideLine M / inset door position
- ▶ Installation

Installing activators and end stops in the runner profile

Silent System: ☒



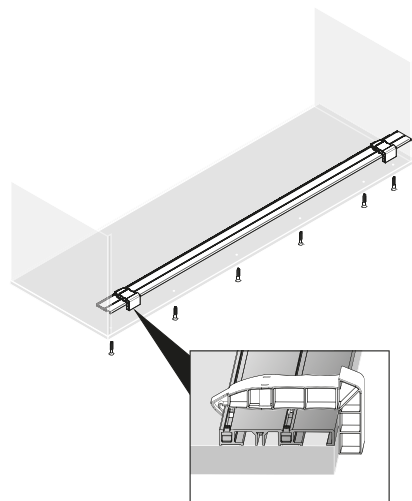
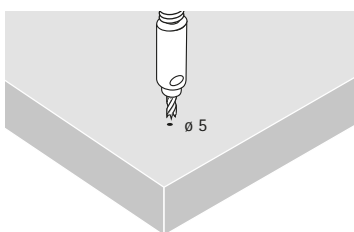
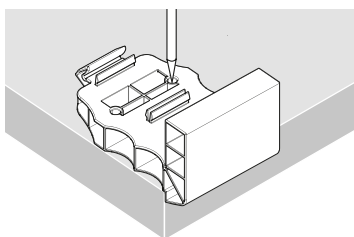
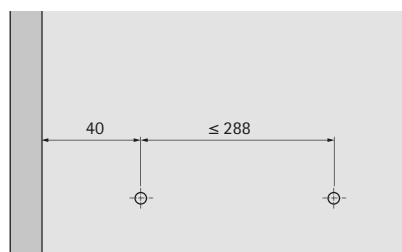
Silent System: ☑



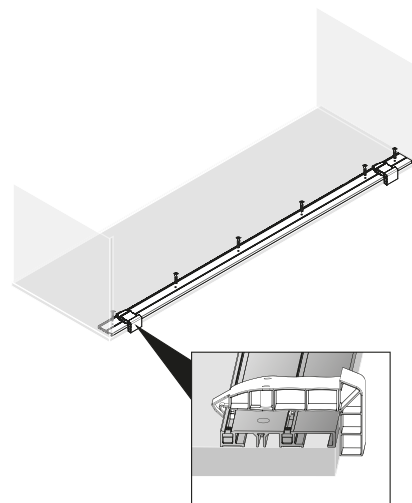
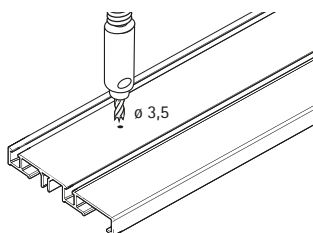
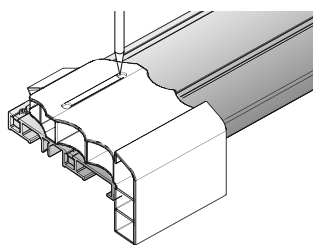
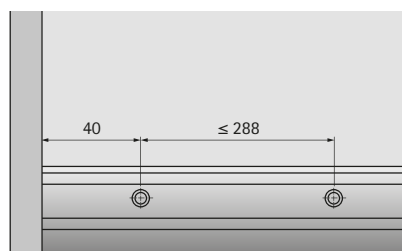
Sliding door system / bottom running

- SlideLine M / inset door position
- Installation

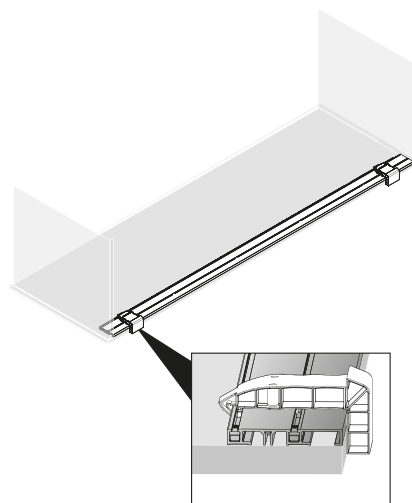
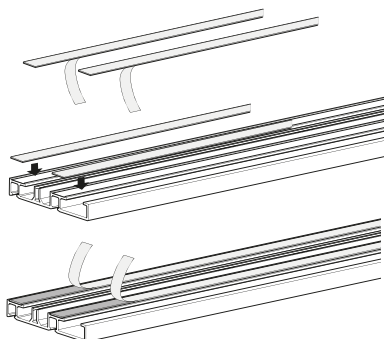
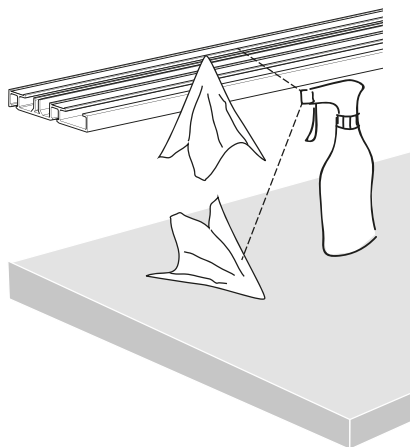
Installing 2-track runner profile for screwing on in the screw slot



Installing 2-track runner profile for screwing on



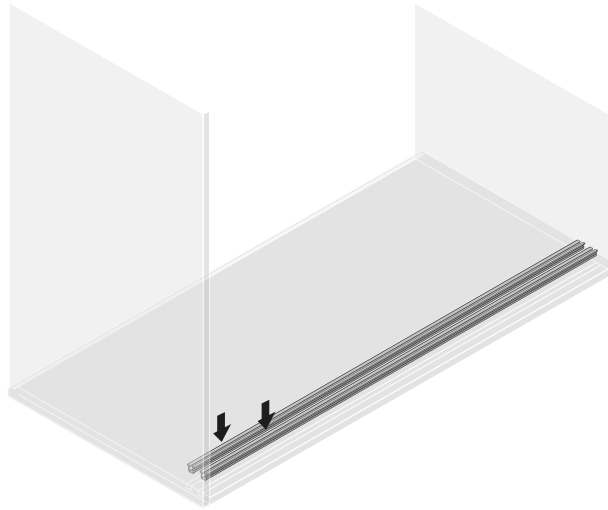
Installing 2-track runner profile for gluing on



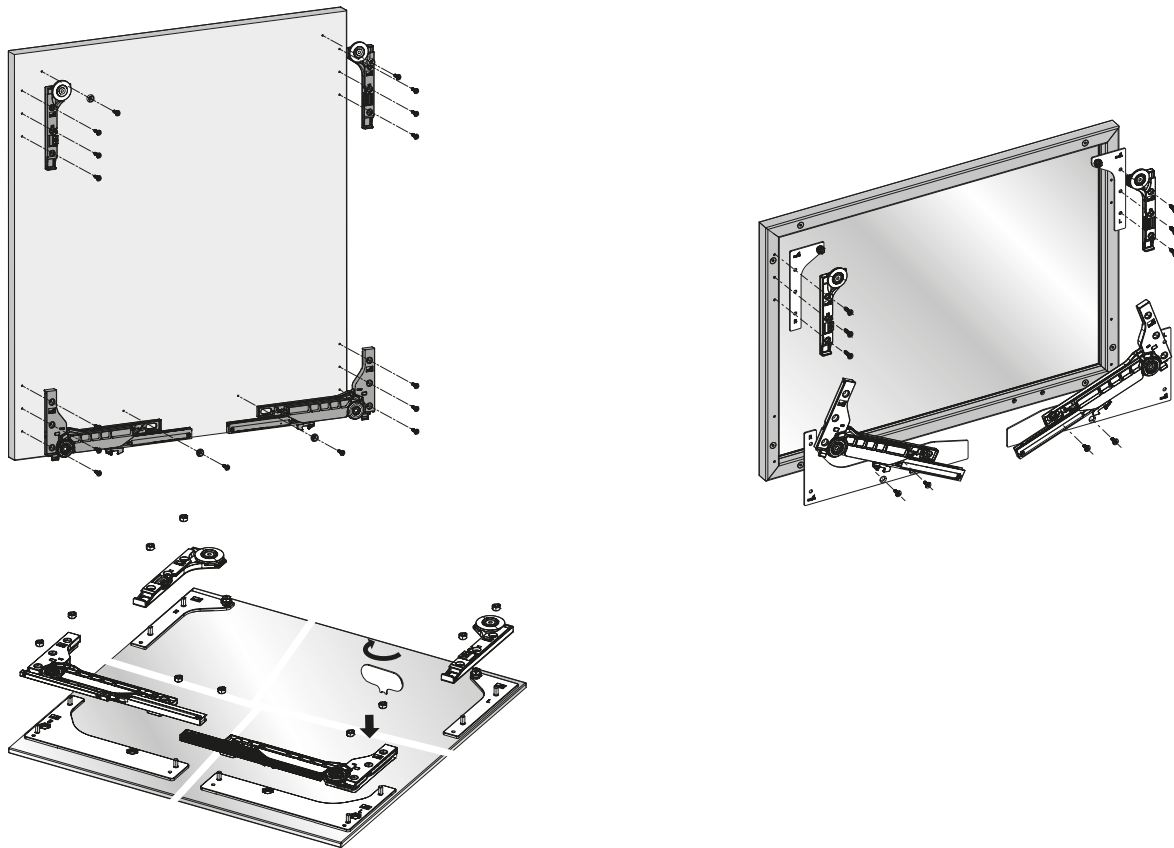
Sliding door system / bottom running

- ▶ SlideLine M / inset door position
- ▶ Installation

Installing 1-track runner profile for pressing in



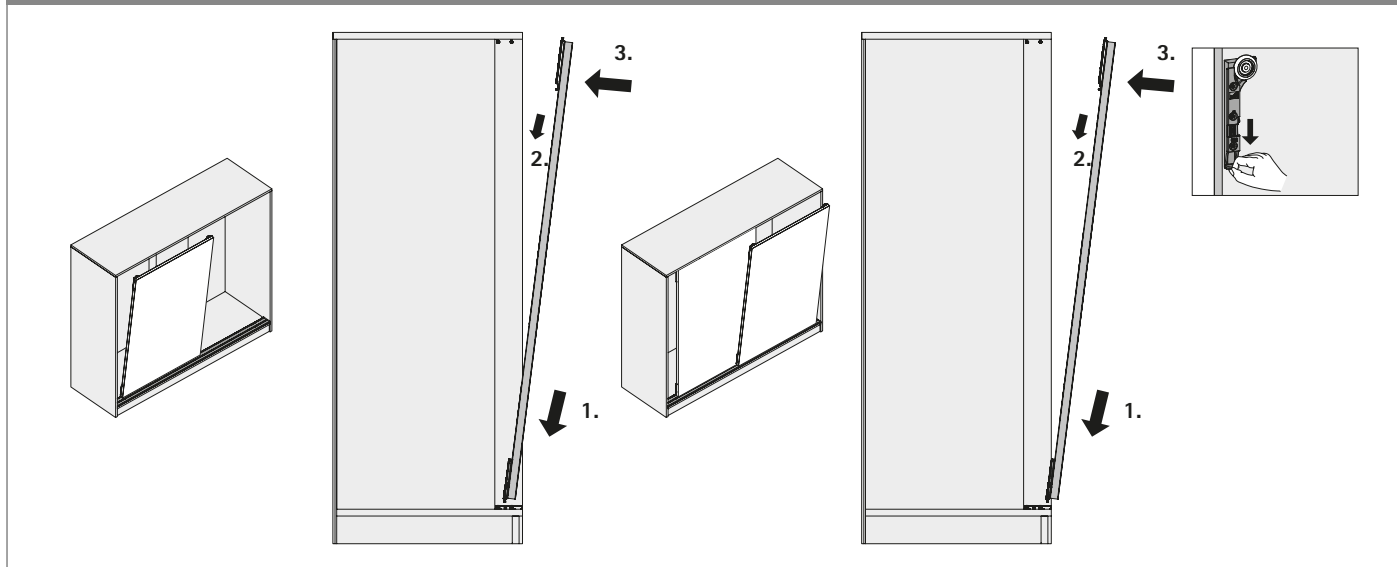
Installing the fitting and upgrade sets



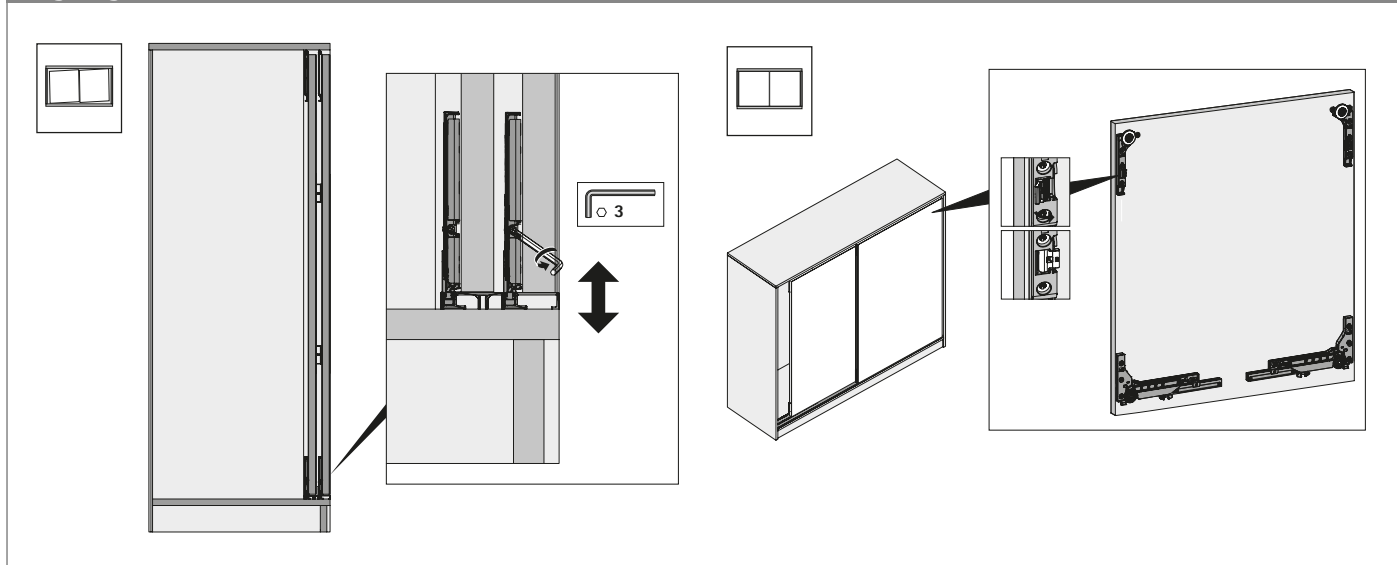
Sliding door system / bottom running

- ▶ SlideLine M / inset door position
- ▶ Installation

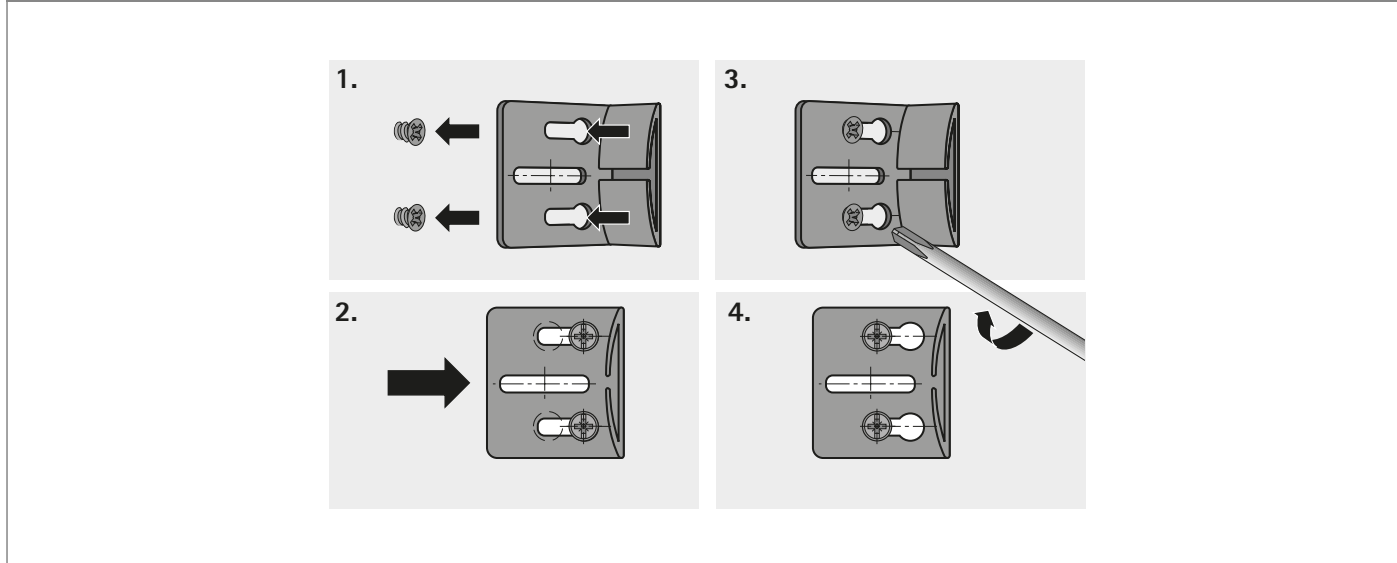
Installation the doors



Aligning doors



Installing spacer



Sliding door system / bottom running

- ▶ SlideLine 55 / inset door position
- ▶ All the benefits at a glance



The perfect gateway. The SlideLine 55 bottom running sliding door system is the attractively priced gateway to the world of sliding. The system leaves no margin of doubt with its ease of installation and straightforward handling. Light doors weighing up to 15 kg run in plastic profiles. Aluminium profiles are used for heavier doors – up to 30 kg. By way of option, the system can be upgraded with noticeable effect by adding the adaptive Silent System.



Easily installed: place door in bottom profile, pull down lever on the guide component and engage in top profile – that's all there is to it.



The adaptive Silent System upgrades the SlideLine 55 with noticeable effect.

Sliding door system / bottom running

- ▶ SlideLine 55 / inset door position
- ▶ Summary



Performance summary

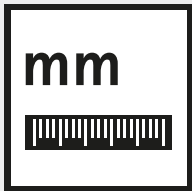
32 – 33

- ▶ Technical details in brief
- ▶ Door sizes
- ▶ Silent System
- ▶ Operating principle



System components

34 – 35



Planning dimensions

36



Installation

37



Technical Information

- ▶ Calculating door weights
- ▶ Design advice sliding door systems
- ▶ Quality criteria

46 – 47

48 – 50

51

Sliding door system / bottom running

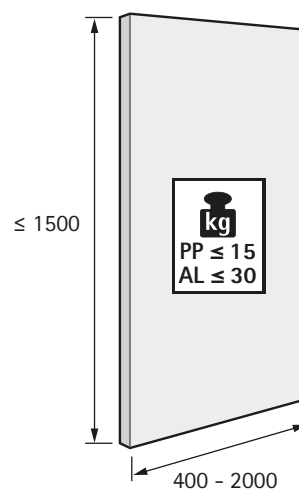


- ▶ SlideLine 55 / inset door position
- ▶ Performance summary

Technical details in brief

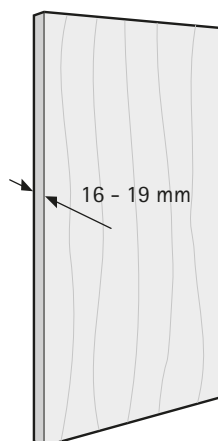
- ▶ 2-track, bottom-running sliding door system
- ▶ Inset door position
- ▶ For wooden doors
- ▶ Door weight up to 15 kg with plastic profiles
- ▶ Door weight up to 30 kg with aluminium profiles
- ▶ Door height up to 1500 mm
- ▶ Door width 400 - 2000 mm
- ▶ Door thicknesses 16 - 19 mm
- ▶ Height adjustment +/- 1 mm
- ▶ Tested to EN 15706, Level 3

Door format and door weight

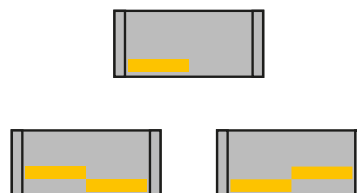


see pages 46 – 47

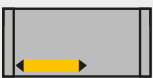
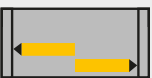
Door material



Number of door wings and door position

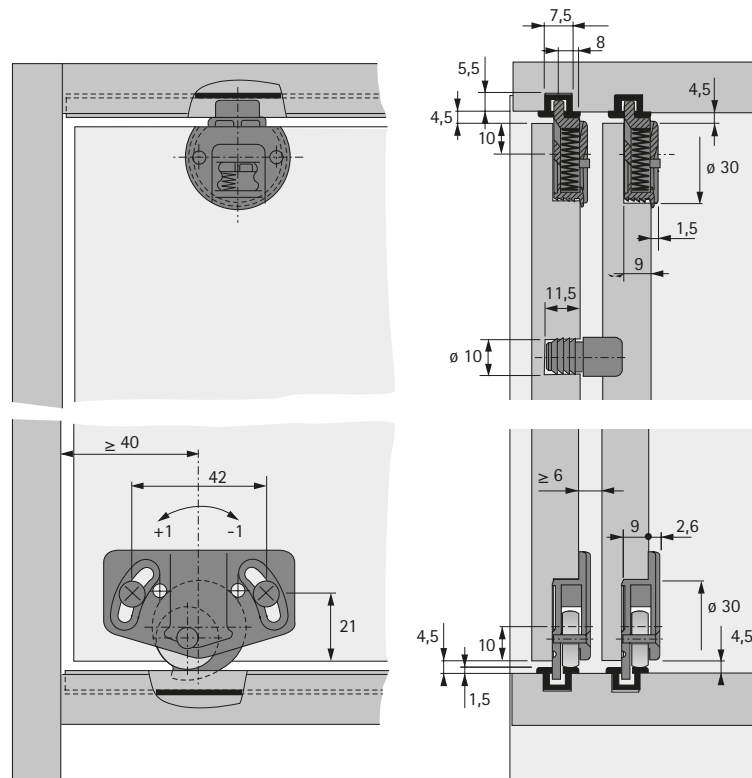


Silent System

	1-door	2-door		
Soft closing				



Operating principle



Screw on running component



- ▶ 2 running components must be fitted per door
- ▶ Height adjustable
- ▶ With dual bearing axle
- ▶ Plastic, brown

Door weight per door (max)	Order no.	PU
15	1 006 347	500 ea.
30	1 008 560	500 ea.

Guide components with spring loaded bolt



- ▶ 2 guide components must be fitted per door
- ▶ Plastic

Version	Colour	Order no.	PU
straight bolt	brown	0 025 123	1000 ea.
angled bolt	black	9 002 759	1000 ea.

Silent System



- ▶ Set contains all the components required for soft closing a 2-door cabinet
- ▶ Maximum door weight 20 kg

Set comprises:

- ▶ Soft closing set
- ▶ 2 activators

Advice:

- ▶ Cannot be used with aluminium framed doors

Order no.	PU
9 079 731	1 set

Sliding door system / bottom running

- ▶ SlideLine 55 / inset door position
- ▶ System components

Runner and guide profiles



- ▶ 4 profiles must be fitted on a 2-door cabinet
- ▶ Plastic profiles: max. door weight 15 kg
- ▶ Aluminium profiles: max. door weight 30 kg

Advice:

- ▶ Customised lengths on request

Material	Surface finish / colour	Length mm	Order no.	PU
Plastic	white	4000	0 025 120	30 ea.
Plastic	brown	4000	0 025 121	30 ea.
Plastic	beige	4000	0 025 660	30 ea.
Plastic	grey	4000	0 061 546	30 ea.
Plastic	black	4000	0 066 900	30 ea.
Aluminium	silver Anodized	4000	1 079 090	4 ea.
Aluminium	dark brown Anodized	4000	0 070 961	4 ea.

Spacer for pressing in



- ▶ 1 spacer required for 2-door cabinet
- ▶ For max. door weight 15 kg
- ▶ Only in combination with the plastic profile
- ▶ Plastic, brown

Order no.	PU
1 005 706	3000 ea.

Screw on spacer



- ▶ 1 spacer required for 2-door cabinet
- ▶ For max. door weight 30 kg
- ▶ Galvanised steel

Order no.	PU
1 005 632	3000 ea.

- ▶ SlideLine 55 / inset door position
- ▶ Planning dimensions

[illegible]

Technical drawings of the 1000 Series window hinge system, showing side and end views with dimensions and callouts for screws.

Top View (Left): Shows the hinge assembly with dimensions: 13, 224, 7, 32, 50, ≥ 88 , 145, and 161,5. Callouts indicate screws: $\varnothing 3,5$ and $\varnothing 6,3$.

Top View (Right): Shows the hinge assembly with dimensions: 224, 13, 12, 56, 32, 37, and ≥ 88 . Callouts indicate screws: $\varnothing 3,5$ and $\varnothing 6,3$.

Side View (Left): Shows the hinge assembly with dimensions: 1,5, 4,5, 50, 32, 49, and 12. Callouts indicate screws: $\varnothing 3,5$ and $\varnothing 6,3$.

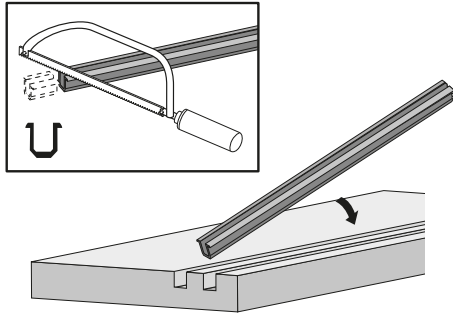
Side View (Right): Shows the hinge assembly with dimensions: 27 and 3,5. Callouts indicate screws: $\varnothing 3,5$ and $\varnothing 6,3$.

Technical drawing of a two-part sliding door system. The drawing shows two horizontal sections of the door, each with a height of 18,5. The total height of the door is 27. The distance between the two sections is 161,5. The distance from the left edge of the first section to the center of the roller is 224. The distance from the center of the roller to the right edge of the first section is 13. The distance from the center of the roller to the center of the second section is 224. The distance from the center of the second section to the right edge of the second section is 13. The distance from the right edge of the second section to the right edge of the frame is ≥ 88 . The distance from the right edge of the second section to the center of the roller is 37. The distance from the center of the roller to the right edge of the second section is 49. The distance from the center of the roller to the right edge of the second section is 1,5.

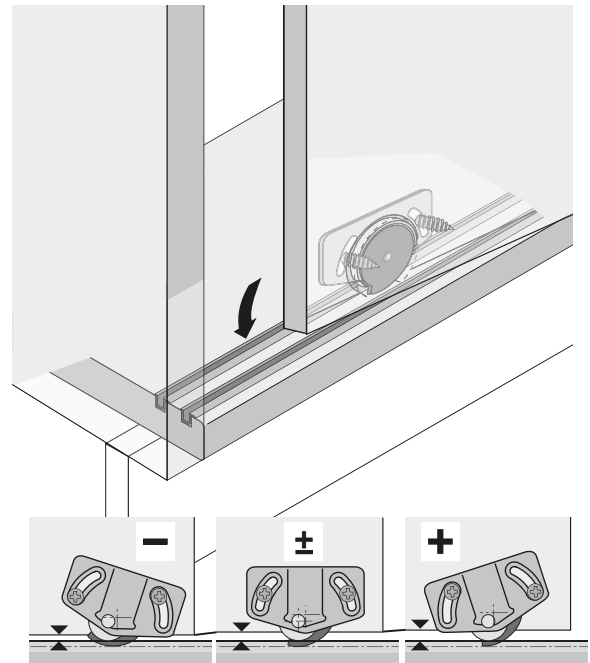
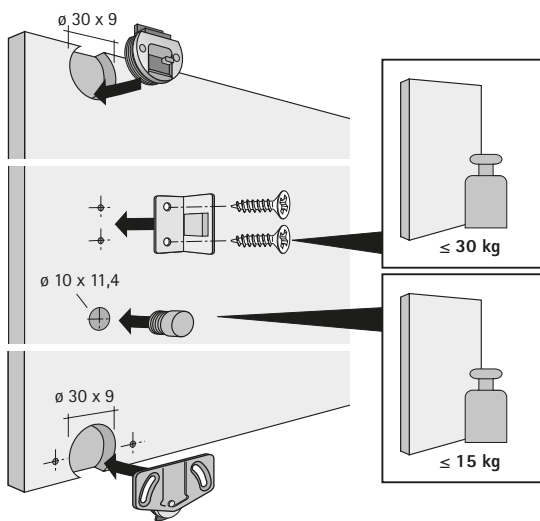
Sliding door system / bottom running

- SlideLine 55 / inset door position
- Installation

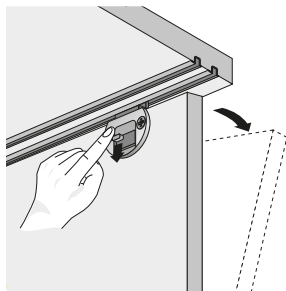
Installation runner and guide profile



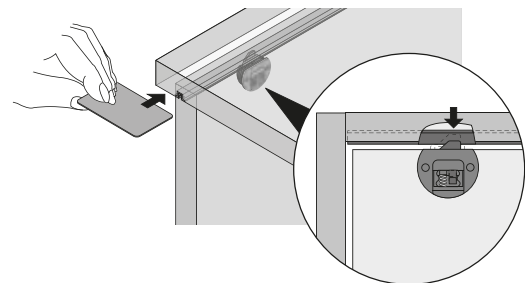
Preparing / installation door



Removing door / guide component with straight bolt



Removing door / Guide component with angled bolt



Sliding door systems / bottom running

- ▶ SlideLine 56 / inset door position
- ▶ All the benefits at a glance



The big little one. Universal in use. Uncomplicated technology. User friendly in every day use. SlideLine 56 is the bottom running sliding door system with many capabilities. You can use it to move doors in a height of up to 2000 mm

and weighing as much as 40 kg – not only a smart solution for sideboards but also for smaller type wardrobes. Installation could'nt be easier: rout two grooves into each of the identical top and bottom panels. Up and running!



Cut to length, profiles are pressed into two identically routed grooves in the top and bottom panel.



Running components easily screw mount in cup hole.



The door is easy to mount in the bottom runner profile.



Push up guide component, fix in guide profile, done!

Sliding door systems / bottom running

- ▶ SlideLine 56 / inset door position
- ▶ Summary



Performance summary

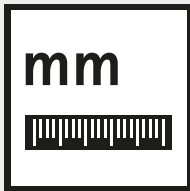
40 – 41

- ▶ Technical details in brief
- ▶ Door sizes
- ▶ Silent System
- ▶ Operating principle



System components

42



Planning dimensions

43



Installation

44 – 45



Technical Information

- ▶ Calculating door weights
- ▶ Design advice sliding door systems
- ▶ Quality criteria

46 – 47

48 – 50

51

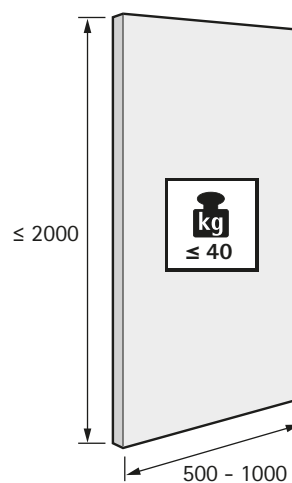


- ▶ SlideLine 56 / inset door position
- ▶ Performance summary

Technical details in brief

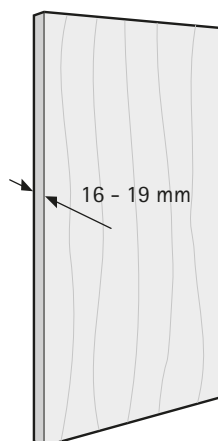
- ▶ Bottom running sliding door system
- ▶ Inset door position
- ▶ For wooden doors
- ▶ Door weight up to 40 kg
- ▶ Door height up to 2000 mm
- ▶ Door width 500 - 1000 mm
- ▶ For optional use with Silent System
- ▶ Runner and guide profile in aluminium
- ▶ Tested to EN 15706, Level 3

Door format and door weight

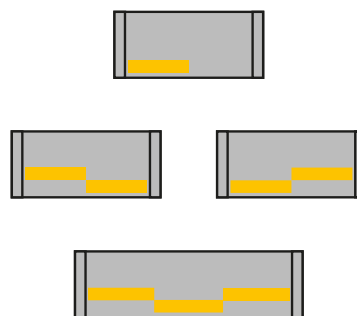


see pages 46 – 47

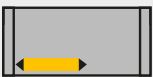
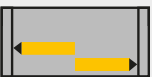
Door material



Number of door wings and door position



Silent System

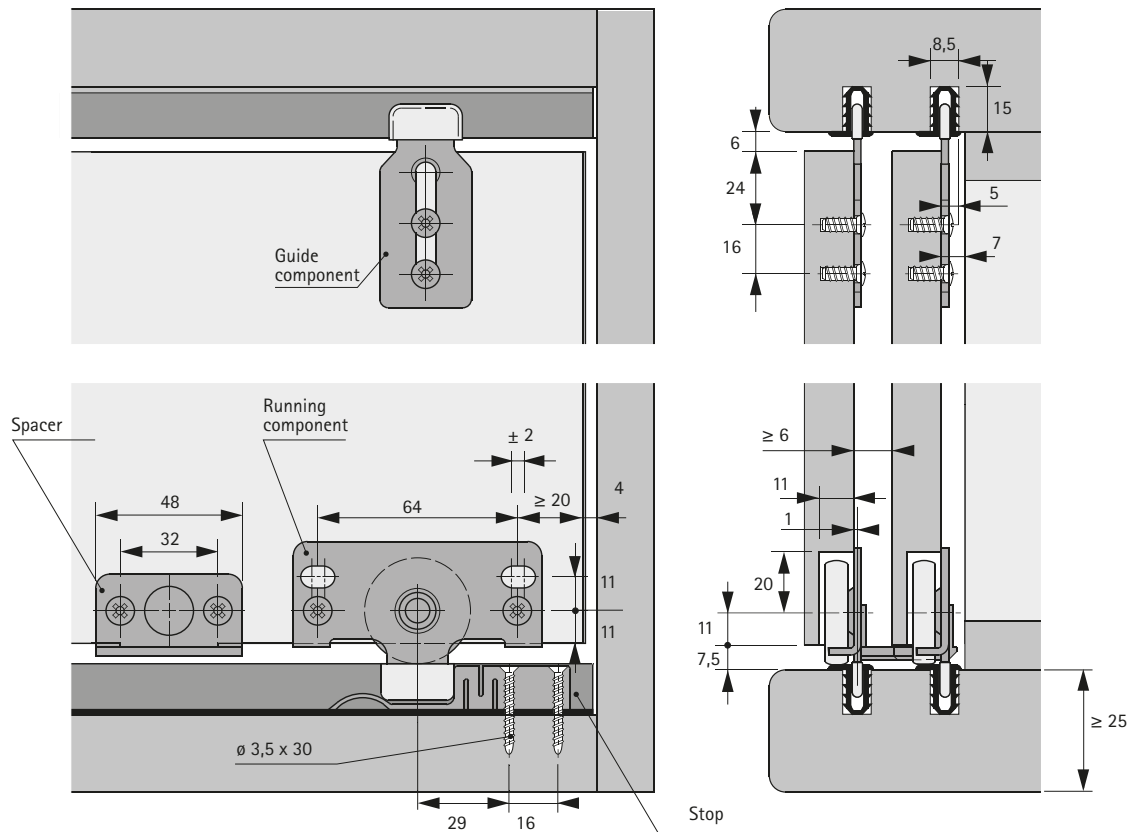
	1-door	2-door		
Soft closing				

Sliding door system / bottom running

- ▶ SlideLine 56 / inset door position
- ▶ Performance summary



Operating principle



Sliding door system / bottom running

- ▶ SlideLine 56 / inset door position
- ▶ System components



SlideLine 56 set



Set contains all the components required for 1 cabinet with 2 sliding doors or for 1 cabinet with 3 sliding doors

Set comprises:

1 cabinet with 2 sliding doors:

- ▶ 4 running components
- ▶ 4 guide components
- ▶ 2 stops
- ▶ 2 spacers

1 cabinet with 3 sliding doors:

- ▶ 6 running components
- ▶ 6 guide components
- ▶ 2 stops
- ▶ 3 spacers
- ▶ 1 centre stop

Advice:

- ▶ Please order profiles separately

Description	Order no.	PU
For 1 cabinet with 2 sliding doors	0 045 234	1 set
For 1 cabinet with 3 sliding doors	0 045 235	1 set

Silent System



- ▶ Set contains all the components required for soft closing a 2-door cabinet
- ▶ Maximum door weight 20 kg

Set comprises:

- ▶ Soft closing set
- ▶ 2 activators

Advice:

- ▶ Cannot be used with aluminium framed doors

Order no.	PU
9 079 731	1 set

Runner and guide profiles



- ▶ 4 profiles must be fitted per cabinet
- ▶ Aluminium, anodized

Advice:

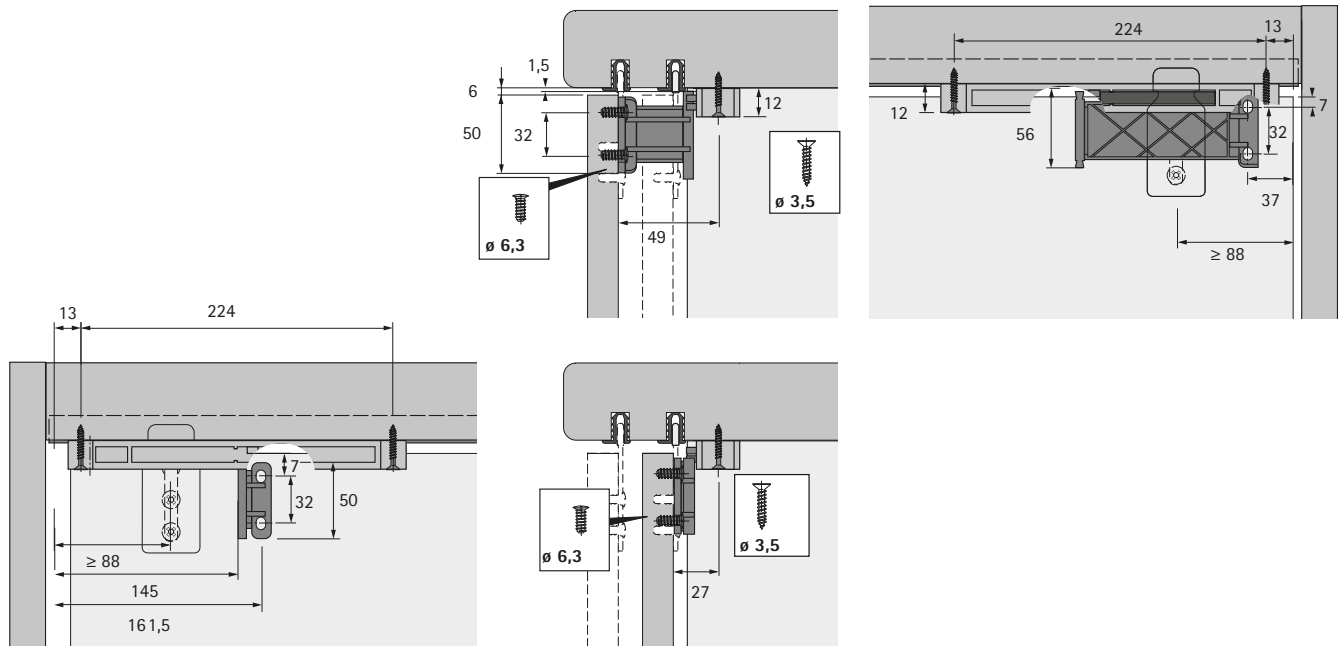
- ▶ Customised lengths on request

Finish	Length mm	Order no.	PU
silver anodized	3000	0 071 110	4 ea.
dark anodized	3000	0 071 109	4 ea.

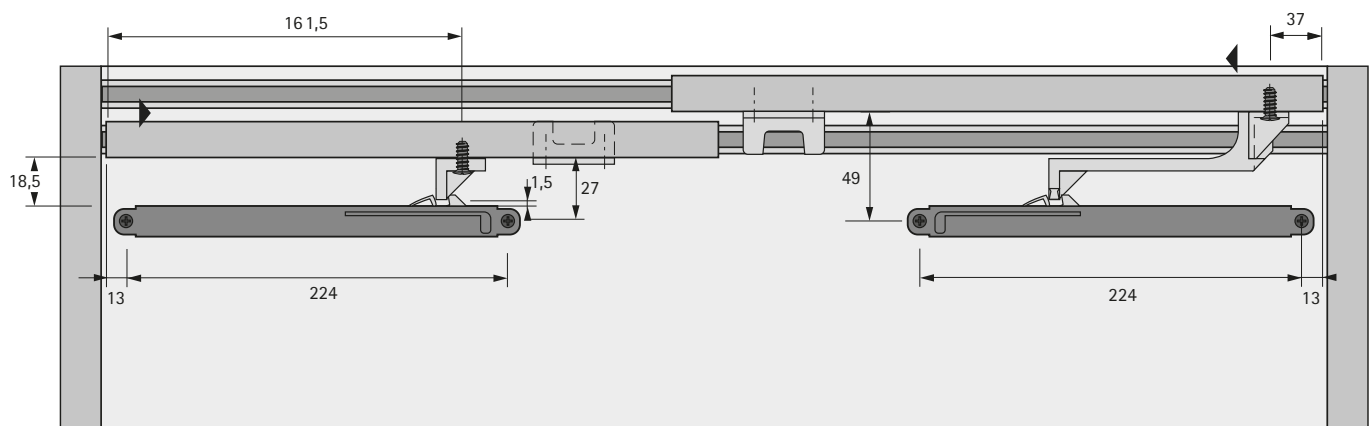
Sliding door system / bottom running

- SlideLine 56 / inset door position
- Planning dimensions

Technical information on Silent System



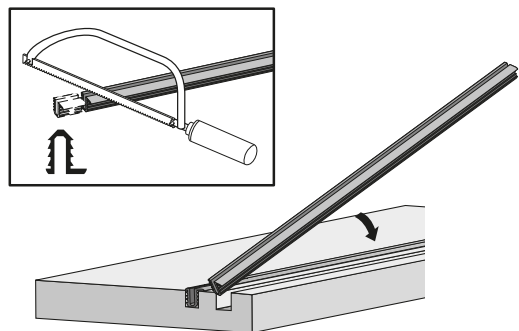
Technical information on Silent System



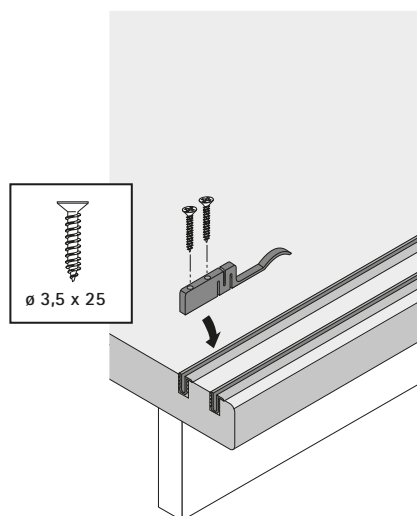
Sliding door system / bottom running

- ▶ SlideLine 56 / inset door position
- ▶ Installation

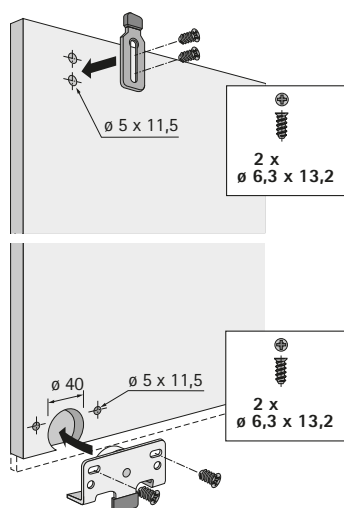
Installation runner and guide profile



Installing end stops



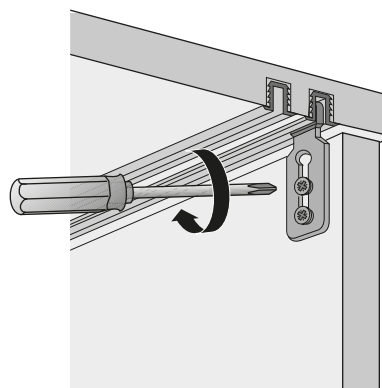
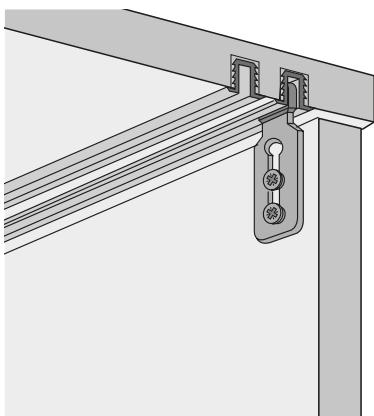
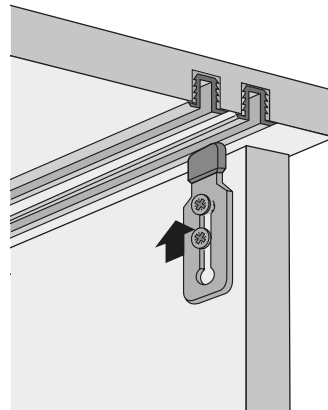
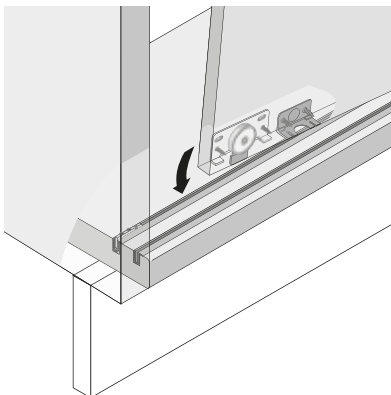
Installing running and guide components



Sliding door system / bottom running

- ▶ SlideLine 56 / inset door position
- ▶ Installation

Installing door



- Technical information
- Calculating door weights

Weight table for chipboard 19 mm

Door weight in kg (density = 700 kg/m³)

Door height mm	Door width mm														
	300	400	500	600	700	800	900	1000	1100	1200	1300	1400	1600	1800	2000
300	1,2	1,6	2,0	2,4	2,8	3,2	3,6	4,0	4,4	4,8	5,2	5,6	6,4	7,2	8,0
400	1,6	2,1	2,7	3,2	3,7	4,3	4,8	5,3	5,9	6,4	6,9	7,5	8,5	9,6	10,6
500	2,0	2,7	3,3	4,0	4,7	5,3	6,0	6,7	7,3	8,0	8,7	9,3	10,6	12,0	13,3
600	2,4	3,2	4,0	4,8	5,6	6,4	7,2	8,0	8,8	9,6	10,4	11,2	12,8	14,4	16,0
700	2,8	3,7	4,7	5,6	6,6	7,5	8,4	9,3	10,2	11,2	12,1	13,0	14,9	16,8	18,6
800	3,2	4,3	5,3	6,4	7,5	8,5	9,6	10,6	11,7	12,8	13,8	14,9	17,0	19,2	21,3
900	3,6	4,8	6,0	7,2	8,4	9,6	10,8	12,0	13,2	14,4	15,6	16,8	19,2	21,6	23,9
1000	4,0	5,3	6,7	8,0	9,3	10,7	12,0	13,3	14,6	16,0	17,3	18,6	21,3	23,9	26,6
1100	4,4	5,9	7,3	8,8	10,2	11,7	13,2	14,6	16,1	17,6	19,0	20,5	23,4	26,3	29,3
1200	4,8	6,4	8,0	9,6	11,2	12,8	14,4	16,0	17,6	19,2	20,8	22,3	25,5	28,7	31,9
1300	5,2	6,9	8,7	10,4	12,1	13,8	15,6	17,3	19,0	20,8	22,5	24,2	27,7	31,1	34,6
1400	5,6	7,5	9,3	11,2	13,0	14,9	16,8	18,6	20,5	22,3	24,2	26,1	29,8	33,5	37,2
1600	6,4	8,5	10,7	12,8	15,0	17,0	19,2	21,3	23,4	25,6	27,7	29,8	34,1	38,3	42,6
1800	7,2	9,6	12,0	14,4	16,8	19,2	21,6	24,0	26,3	28,7	31,1	33,5	38,3	43,1	47,9
2000	8,0	10,6	13,3	16,0	18,6	21,3	23,9	26,6	29,3	31,9	34,6	37,2	42,6	47,9	53,2
2200	8,8	11,7	14,6	17,6	20,5	23,4	26,3	29,3	32,2	35,1	38,0	41,0	46,8	52,7	58,5
2400	9,6	12,8	16,0	19,2	22,3	25,5	28,7	31,9	35,1	38,3	41,5	44,7	51,1	57,5	63,9
2600	10,4	13,8	17,3	20,8	24,2	27,7	31,1	34,6	38,0	41,5	45,0	48,4	55,3	62,2	69,2

Weight table for MDF 19 mm

Door weight in kg (density = 900 kg/m³)

Door height mm	Door width mm														
	300	400	500	600	700	800	900	1000	1100	1200	1300	1400	1600	1800	2000
300	1,5	2,1	2,6	3,1	3,6	4,1	4,6	5,1	5,6	6,2	6,7	7,2	8,2	9,2	10,3
400	2,1	2,7	3,4	4,1	4,8	5,5	6,2	6,8	7,5	8,2	8,9	9,6	10,9	12,3	13,7
500	2,6	3,4	4,3	5,1	6,0	6,8	7,7	8,6	9,4	10,3	11,1	12,0	13,7	15,4	17,1
600	3,1	4,1	5,1	6,2	7,2	8,2	9,2	10,3	11,3	12,3	13,3	14,4	16,4	18,5	20,5
700	3,6	4,8	6,0	7,2	8,4	9,6	10,8	12,0	13,2	14,4	15,6	16,8	19,2	21,6	23,9
800	4,1	5,5	6,8	8,2	9,6	10,9	12,3	13,7	15,1	16,4	17,8	19,2	21,9	24,6	27,4
900	4,6	6,2	7,7	9,2	10,8	12,3	13,9	15,4	16,9	18,5	20,0	21,6	24,6	27,7	30,8
1000	5,1	6,8	8,6	10,3	12,0	13,7	15,4	17,1	18,8	20,5	22,2	23,9	27,4	30,8	34,2
1100	5,6	7,5	9,4	11,3	13,2	15,1	16,9	18,8	20,7	22,6	24,5	26,3	30,1	32,9	37,6
1200	6,2	8,2	10,3	12,3	14,4	16,4	18,5	20,5	22,6	24,6	26,7	28,7	32,8	36,9	41,0
1300	6,7	8,9	11,1	13,3	15,6	17,8	20,0	22,2	24,5	26,7	28,9	31,1	35,6	40,0	44,5
1400	7,2	9,6	12,0	14,4	16,8	19,2	21,6	23,9	26,3	28,7	31,1	33,5	38,3	43,1	47,9
1600	8,2	10,9	13,7	16,4	19,2	21,9	24,6	27,4	30,1	32,8	35,6	38,3	43,8	49,3	54,7
1800	9,2	12,3	15,4	18,5	21,6	24,6	27,7	30,8	33,9	36,9	40,0	43,1	49,3	55,4	61,6
2000	10,3	13,7	17,1	20,5	23,9	27,4	30,8	34,2	37,6	41,0	44,5	47,9	54,7	61,6	68,4
2200	11,3	15,5	18,8	22,6	26,3	30,1	33,9	37,6	41,4	45,1	48,9	52,7	60,2	67,7	75,2
2400	12,3	16,4	20,5	24,6	28,7	32,8	36,9	41,0	45,1	49,3	53,4	57,5	65,7	73,9	82,1
2600	13,3	17,8	22,2	26,7	31,1	35,6	40,0	44,5	48,9	53,4	57,8	62,2	71,1	80,0	88,9

- Technical information
- Calculating door weights

Adjustment to different material thicknesses

The table entries refer to 19 mm thick material.
The table entries must be multiplied by a factor in order to adjust to material of different thickness.

Material thickness mm	Factor
15	0,79
16	0,84
18	0,95
19	1,00
20	1,05
22	1,16
23	1,21
26	1,37
29	1,53

Formula for conversion

Door weight = weight for door in thickness of 19 mm from table above x factor

Example

Chipboard door

H x W x D = 2000 x 1800 x 16

Weight shown in table for this door size, but material in a thickness of 19 mm = 47.9 kg

Convert to 16 mm door thickness using factor of 0.84 as shown in table on left

Door weight = 47.9 kg x 0.84 = 40.2 kg

Calculating weights of doors in alternative door materials

Density of various materials in kg/m³

Material	Density kg/m ³
Acrylic glass	1200
Aluminium	2700
Balsa wood	120
Concrete	2400
Lead	11300
Iron	7800
Gypsum plasterboard	900
Glass	2600
Hardboard	1000
Hardwood, wet (beech)	900
Hardwood, dry (beech)	800
Cork	300

To calculate the weight of doors in alternative door materials, the specific density of the door material must be taken into consideration.

Example

Door made of acrylic glass with a density of 1200 kg/m³

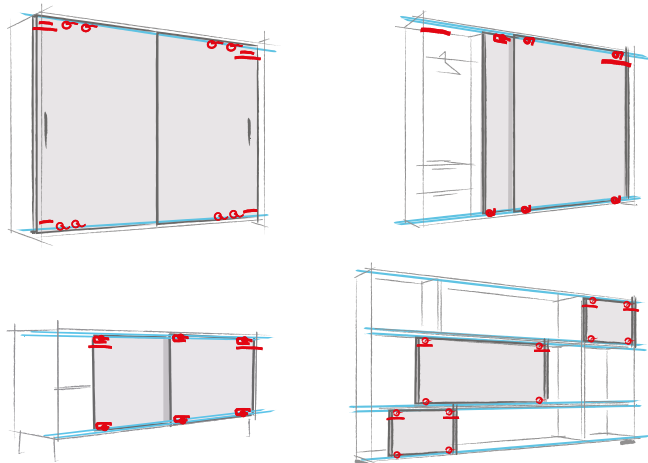
Door height: 2000 mm, door width: 1800 mm, material thickness: 6 mm

$$\begin{array}{c} \text{Door weight [kg]} \\ 25,9 \text{ kg} \end{array} = \begin{array}{c} \text{Height [m]} \\ 2 \end{array} \times \begin{array}{c} \text{Width [m]} \\ 1,8 \end{array} \times \begin{array}{c} \text{Material thickness [m]} \\ 0,006 \end{array} \times \begin{array}{c} \text{Density [kg/m}^3\text{]} \\ 1200 \end{array}$$

Sliding door systems

- Technical Information
- Design advice

Always the best system



Hettich sliding door systems give you the ideal solution to meet any consumer demand, because Hettich offers you numerous system options. Each design provides its own particular benefits and creative impact on the piece of furniture. Take advantage of Hettich sliding door systems for all cabinets and shelf units. We are now going to give you a brief introduction to the various systems, so you can quickly find the main criteria for selecting the right sliding door system.

Option 1: 1-track or multi-track sliding doors



1-track sliding doors do not close off furniture completely. The door only conceals individual furniture segments and can be pushed to the side. Typical application: the living room combination in which the TV set disappears behind the sliding door after use.

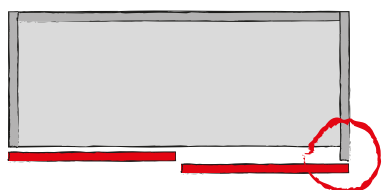


Multi-track sliding doors can close off the entire furniture carcass. At least two doors run in profiles installed one behind the other. Ideal for office cabinets, wardrobes and pantry units: the closed doors conceal the cabinet's entire contents, creating a neat and tidy look in a matter of seconds.



Flush fitted sliding doors are a special innovative type that also close off the complete carcass. The closed cabinet front panel forms an absolutely flat surface, reducing reveals to a minimum. An option for the most exacting demands on design. The doors run in a single track; on opening, however, a special mechanism automatically allows them to run one behind the other.

Option 2: overlay or inset sliding doors



Overlay sliding doors conceal – viewed from the front – the carcass side, the top panel and bottom panel. This makes the front panels the dominant design element of a piece of furniture. Please note: for furniture designed with two doors, the two carcass sides must be produced in different depths.

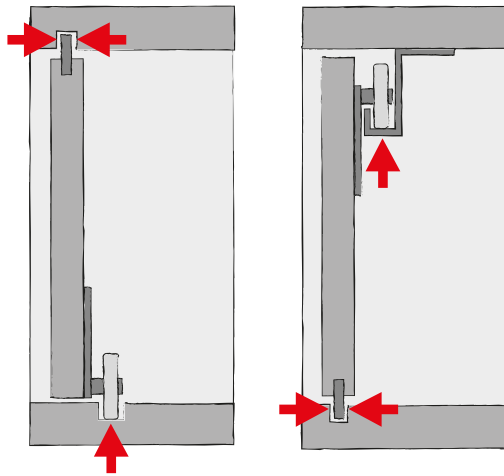


Inset sliding doors, in contrast, move between the carcass sides, the top panel and the bottom panel. The carcass elements are visible from the front, also influencing the design of furniture. The carcass sides are of identical depth.

Sliding door systems

- Technical Information
- Design advice

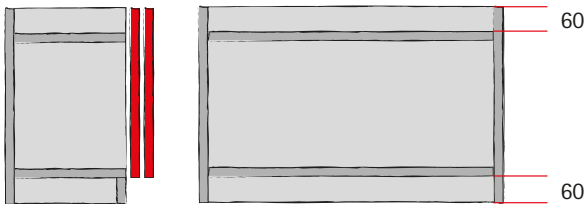
Option 3: bottom running or top running sliding doors



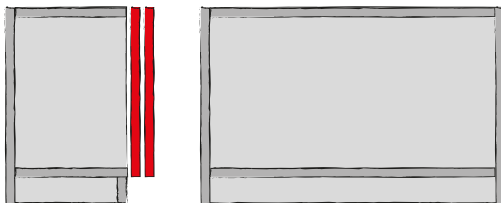
Bottom running sliding doors stand on rollers along their bottom edge and are stabilised by a guide at the top edge of the door. Given the uncomplicated carcass construction, predominantly low door weights and straightforward installation, bottom running doors are seen as the optimum gateway to constructing sliding door cabinets.

Top running sliding doors are suspended from the top panel. A guide at the bottom panel prevents the doors from wobbling. The fitting components can be positioned unobtrusively at the top and bottom panel – for furniture designed with a look of harmony. Top running sliding doors are ideal for heavy doors, e.g. in large wardrobes.

Option 4: installing sliding doors on or in front of the top panel

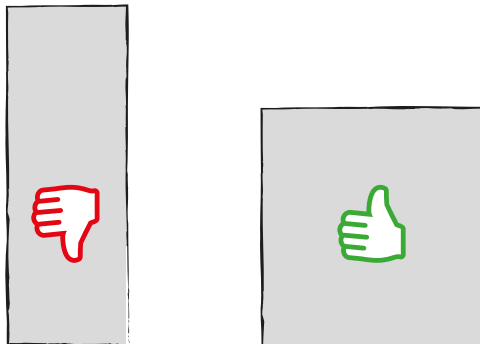


With a simple trick, the fitting technology can be installed largely **out of view on the top panel**: the top panel is lowered by 60 mm. Proviso: the piece of furniture is a tall cabinet with a top panel that is positioned out of sight.



On low cabinets, the top panel is always visible. In this case, carcass and top panel are conventionally mounted at right angles and the fitting technology is either attached **in front of or in the top or bottom panel**. The doors close flush at the top – a neat looking solution. Incidentally: the cabinet here is designed in the same way as hinged door cabinets. Benefit: subsequent conversion from hinged door to sliding door system can be done with little effort.

Option 5: sliding door format and material

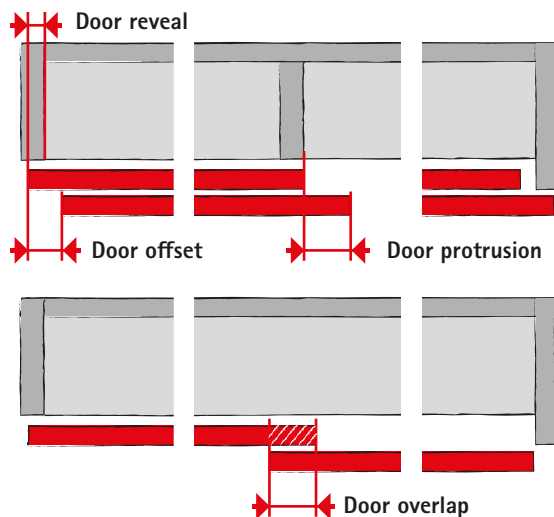


Key to selecting the appropriate system: format and material of the sliding door. In terms of format, bear in mind that wider doors run far more stably than narrow, tall sliding doors. Rule of thumb: the sliding door width should be at least half the height of the door.

Sliding door systems

- Technical Information
- Design advice

Definition of important dimensions



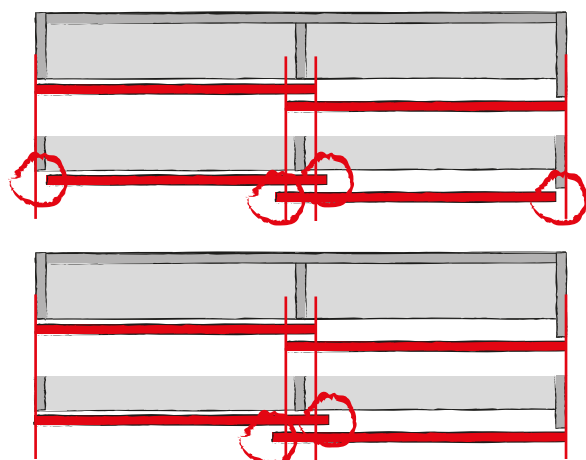
The **door reveal** is the extent to which the door overlaps the carcass side.

The **door protrusion** is the measure of opened door offset to the centre panel.

The **door offset** prevents the forward door from knocking against the handle on the rear door.

Door overlap is the surface of the rear most door that is permanently covered by the front most door. The overlap should be approx. twice as large as the gap between front most door and rear most door to avoid being able to see inside the cabinet through the gap. On aluminium framed doors, frame width is often taken as the overlap. This positions the upright frame sections of the front most door and rear most door exactly in front of one another down the middle of the cabinet.

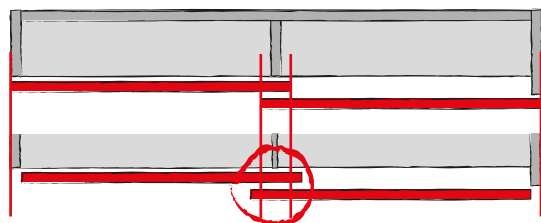
Door reveal as a variable influencing door protrusion



Reducing the door reveal increases the door protrusion on doors of identical width.

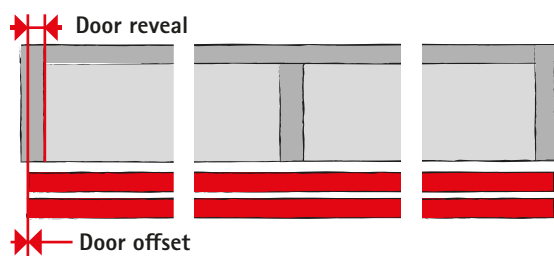
Increasing the door overlap on account of a larger door increases the door protrusion.

The centre panel as a variable influencing door protrusion



A thinner centre panel increases the door protrusion on doors of identical width.

Design with flush opening doors



The rear door must produce the same door reveal as the forward door. It must be noted here that this requires the use of special profiles.

Sliding door system

- Technical information
- Quality criteria

Quality that meets all the demands

The quality of the sliding door systems is monitored continuously. Hettich fittings comply with the national and international quality standards of the markets our customers operate in. The diagrams below show some of the tests to which Hettich fittings are subjected.

Load capacity

The values stated in the catalogue for Hettich sliding door systems comprise the permissible total weight of the door in combination with the permitted door sizes. All Hettich sliding door systems pass the overload test to EN 15706¹. The sliding door systems are suitable for furniture to EN 14749 when processed correctly as specified in the catalogue.

Corrosion test

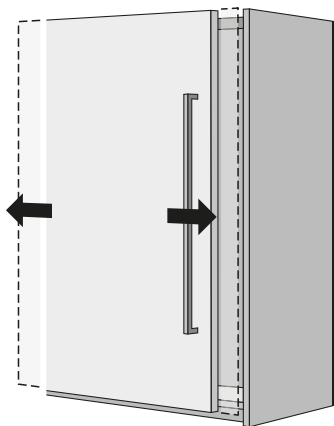
Hettich sliding door systems satisfy the requirements on corrosion defined in EN 15706, 72-hour condensation-water test to EN 6270.

¹ TopLine 1200 / 1210 / 1230 meets the requirements of ANSI / BHMA

Endurance test

The door must withstand a defined number of opening and closing cycles at a defined speed.

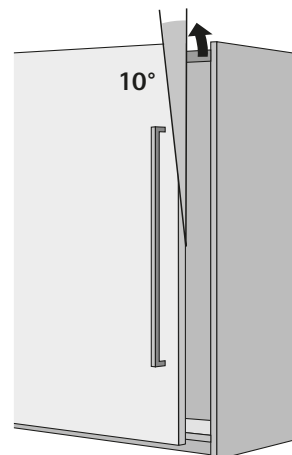
- Level 1: 10,000 cycles
- Level 2: 20,000 cycles
- Level 3: 40,000 cycles



Lift off guard

The door is pulled up and forwards at an angle with a defined force and must not become detached or fall out of the cabinet

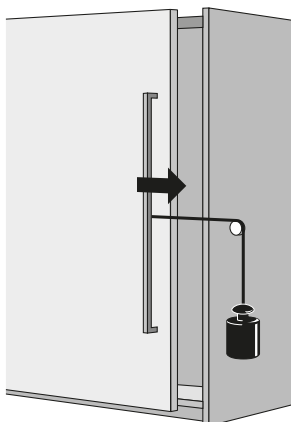
- Level 1: 150 N
- Level 2: 200 N
- Level 3: 250 N



Closing test

The door must withstand a specific number of closing cycles under a defined tensile load.

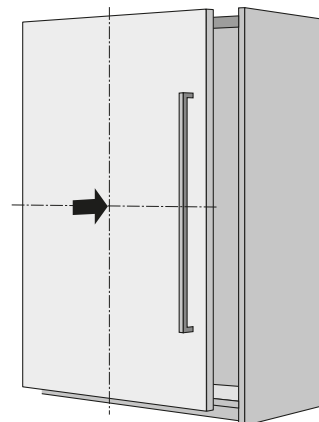
- Level 1: 2 kg
- Level 2: 3 kg
- Level 3: 4 kg

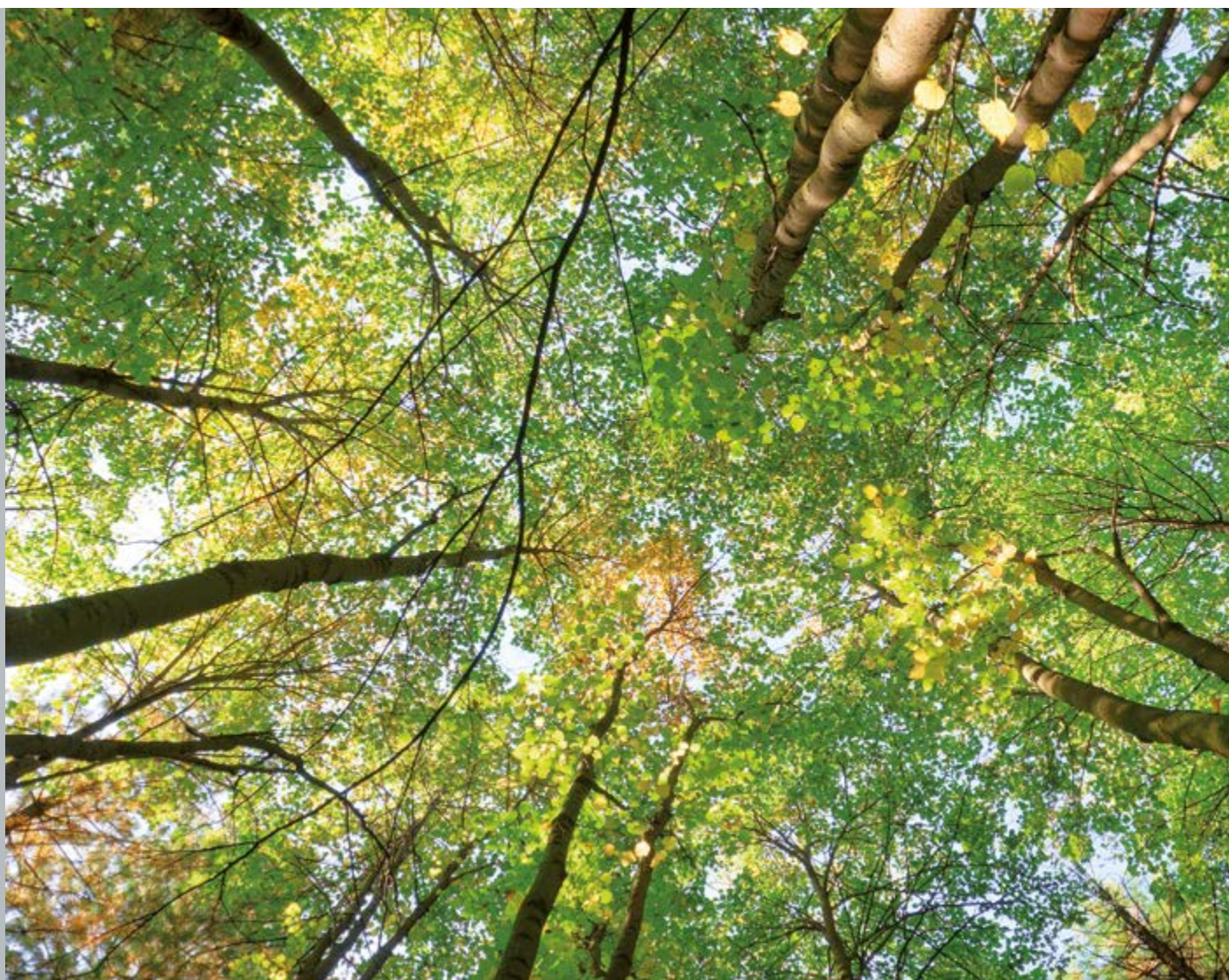


Horizontal safety test

Pressure is applied to the middle of the door with a defined force. The door must not become detached or fall out of the carcase.

- Level 1: 150 N
- Level 2: 200 N
- Level 3: 250 N





Hettich takes a responsibility for the world we live in. This awareness defines the strict policy of environmental management that we practise. Our environmental officer has taken personal responsibility for these aspects throughout the group of companies over a period of many years. In addition, a separate environment committee has been established for each production site.

We regard statutory provisions as minimum requirements. At significant sites we also implement the stringent EMAS Regulation. And we drive forward developments that in future will help to save even more raw materials and support the necessary endeavours towards sustainability.

Hettich environmental management

In 1996 Hettich started introducing effective environmental management systems under the stringent EMAS Regulation (currently: EC Regulation No. 761/2001, including EN ISO 14.001/2004). This not only enables us to

improve our environmental performance on a broad front but also to achieve a high level of safety which, not least, also benefits our customers. This is why we also require our suppliers to meet the necessary minimum standards of environmental protection, industrial safety, health care and social welfare.

The results achieved in the drawer runner and drawer system product segment at the Kirchleugern operation in Germany illustrate the impressive effects these measures have and verifiably demonstrate our tireless endeavours to translate words into action:

Relief to the environment between 1997 and 2008:

Specific water consumption:	56 per cent
Specific power consumption:	21 per cent
Specific heat consumption:	84 per cent
Specific CO ₂ emissions:	29 per cent



Hettich standard for product materials

Hettich underpins its commitment by applying an internal standard for product materials. This ensures that every product – from production to disposal – satisfies all environmental requirements. Hettich products are durable. Appropriately foresighted, our rigorous standards are formulated to ensure that international legislation is also met. This provides a reliable base for marketing furniture worldwide.

Zero-energy building – Hettich Forum

The Hettich Forum building with its neutral energy balance is a shining example of future-proof building design. Photovoltaic panels and a solar collection system providing hot water as well as extensive roof greening and use of rain water underscore this building's overall sustainability

concept in just the same way as the broad use of cellulose insulation material from recycled newspapers, highly efficient heat recovery and the bulb-free lighting concept do.

With the Hettich Group having acquired European Commission GreenBuilding Partner status on 5 March 2009, the comprehensive approach demonstrated by the Hettich Forum has also convinced the adjudicating panel of the national "Green Building Award 2009". Hettich received the first prize to be presented in the "New Building" category.

Technik für Möbel



www.hettich.com

Order no. 9 242 984
1708-006_SlideLine_08/17_HUS/en

Hettich America, L.P.
4295 Hamilton Mill Road
Suite 400
Buford, GA 30518
Phone: 1-800-438-8424
Fax: 1-800-627-5152
info@hettichamerica.net

Technik für Möbel

